

artist of light

Specification

For LED Neon Flex Ribbon

C-FR-ProF22A



CLEAR
LIGHTING

Table of Contents

Introduction	03
1. Specifications & Parameters	04
1.1 Dimensions of Light	
1.2 Technical Parameters	
1.3 Optical Parameters	
2. Functions & Features	05
2.1 Product Features	
2.2 Minimum Bend Diameter	
3. Types of Connector	05
3.1 Injection-moulded Connector	
3.2 Dual Injection-moulded Connector	
3.3 Anti-wicking Ferrule	
4. Mounting Profile	07
4.1 Standard Aluminum Profile	
4.2 Plastic Profile	
4.3 Self-locking Aluminum Profile Ver. 2	
4.4 Self-locking Aluminum Profile Ver. 2	
4.5 Plastic & Aluminum Combination Profile	
4.6 L Shape Self-locking Aluminum Profile Ver. 2	
4.7 T Shape Self-locking Aluminum Profile Ver. 2	
4.8 X Shape Self-locking Aluminum Profile Ver. 2	
4.9 Self-locking Aluminum Profile Ver. 2, Bottom Feed	
4.10 Self-locking Aluminum Profile Ver. 2, Middle Feed	
4.11 Self-locking Aluminum Profile Ver. 2, Side Feed From Left	
4.12 Self-locking Aluminum Profile Ver. 2, Side Feed From Right	
4.13 Curve Stainless Steel Profile	
5. Packaging	13
6. Appendix	14
6.1 Product Naming Convention	
6.2 Certificate	
6.3 Third Party Test Report	
6.4 Reliability Test of Light	
6.5 Figures of Typical Characteristics	
6.6 Wavelength of Color Light	
6.7 Loading Chart	

Introduction

C-FR-ProF22A is a new member of the Artist of Light series with Nichia RGB LED to achieve your desired artistic effect, which employs constant current design.

C-FR-ProF22A is UL/cUL, CE, TUV and RoHS compliant. Moreover, it has passed environmental resistance, optical, mechanical and electrical tests in our lab under the support of advanced experimental equipments and technology to ensure it meets the requirements of harsh environments. Also it has passed relevant tests for third party inspection authority.

Fully encapsulated in the flexible PVC chamber by utilizing consummate extrusion technology, assembled with injection-moulded connectors to achieve IP68 protection, easy for installation and applicable for various circumstances.

C-FR-ProF22A features dynamic color effects with smooth color-mixing illumination and small bend diameter in wave bending shape.

Applications:

1. Outdoor or Indoor Contour/Border Lighting
2. Architectural Outline/Decorative Lighting
3. Cove/Accent Lighting
4. Signage/Statue
5. Display Lighting

1. Specifications & Parameters



Beam
Angle 10%



Bending
Diameter



Flame
Resistant



UV
Resistant



Solvents
Resistant



Saltwater
Resistant



IP 68
Protection

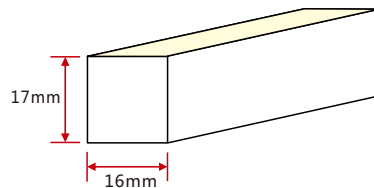
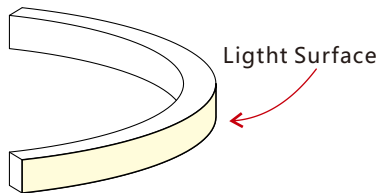


IK08
Protection



3
Years
Warranty

1.1 Dimensions of Light



Note: Unless otherwise stated, the tolerance of the light is $\pm 0.3\text{mm}$.

1.2 Technical Parameters

Technical Parameters

Article No.	C-FR-ProF22A-24CC
Color	RGB
Working Voltage	DC24V
Rated Power/m	12w
LED Qty/m	72LEDs
LED Distance	13.9mm
Min. Cutting Unit	6LEDs (1unit)
Min. Cutting Length	83.3mm(1unit)
Continuous Length	5m
Weight/m	325g
Storage Temperature	-20~60°C
Environmental Working Temperature	-20~45°C
Environmental Installation Temperature	0~45°C
IP Rating	IP68

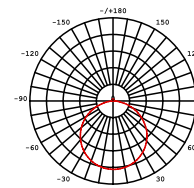


1.3 Optical Parameters

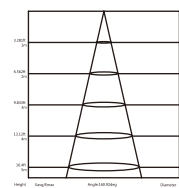
Photometric Data

Article No.	C-FR-ProF22A-24CC		
LED Type	SMD		
Beam angle	160°		
Color	CCT/Wavelength	Lumen/m	Power/m
Red		>40lm	
Green		>120lm	
Blue		>16lm	
White(R+G+B)	/	>176lm	12w

Candle power distribution



Illuminance Characteristics

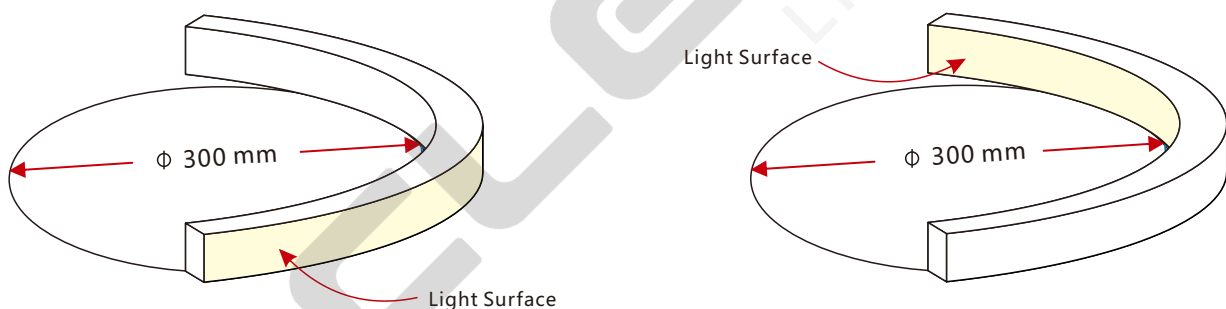


2. Functions & Features

2.1 Product Features

1. High quality Nichia SMD LED chip.
2. UV & flame resistant construction(PVC).
3. Extremely flat profile for slimline projects.
4. Perfect uniform & even light source with invisible light dots.
5. High illumination.
6. Easily to be installed.
7. High IP rating (IP68).
8. The product IP rate is ultimately in line with properly applied IP rated connectors.
9. Continuous length up to 5m by powering one end.
10. Environmentally friendly & energy efficient.
11. Automated production, high reliability & long warranty.
12. 5 year life span (Do not continuously operate over 8 hours per day).

2.2 Minimum Bend Diameter



The light can only be bent along the light surface. Do not bend smaller than allowed minimum bend diameter.

3. Types of Connector

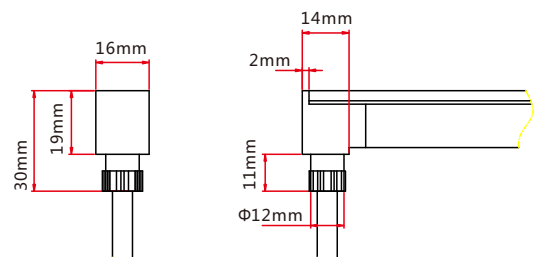
3.1 Injection-moulded Connector

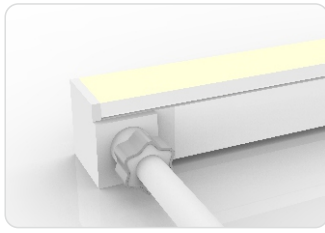
Note: Unless otherwise stated, the tolerance of the connector is $\pm 0.5\text{mm}$.



Injection-moulded Front Connector (bottom)

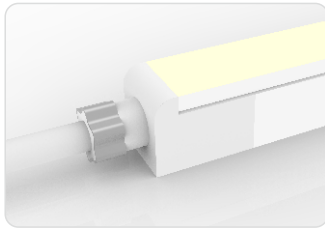
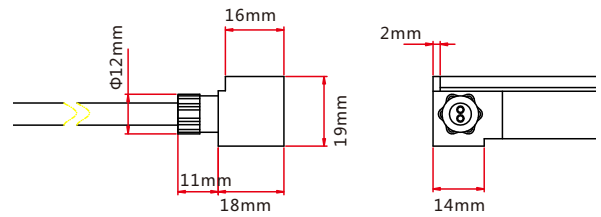
Connects light to power supply with pre-installed bottom feed cable IP67. Available in 0.3m, 1m, 3m, 5m, 10m, 15m, 20m lengths.





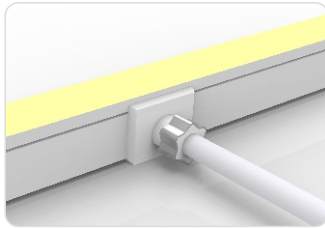
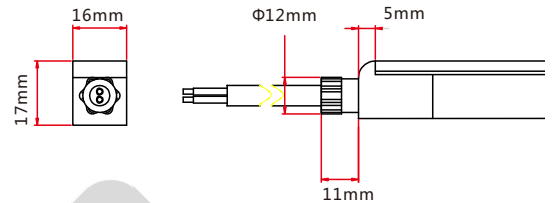
Injection-moulded Front Connector (side)

Connects light to power supply with pre-installed side feed cable, IP67. Available in 0.3m, 1m, 3m, 5m, 10m, 15m, 20m lengths.



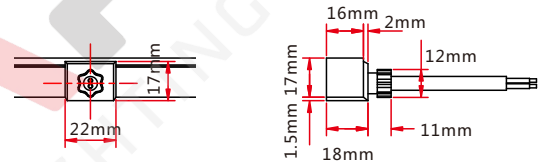
Injection-moulded Front Connector (end)

Connects light to power supply with pre-installed end feed cable, IP67. Available in 0.3m, 1m, 3m, 5m, 10m, 15m, 20m lengths.



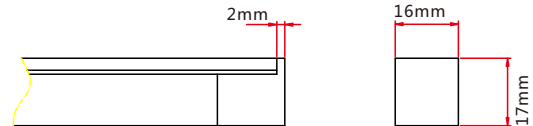
Injection-moulded Middle Feed Connector

Connects light to power supply with pre-installed end feed cable, IP67. Available in 0.3m, 1m, 3m, 5m, 10m, 15m, 20m lengths.



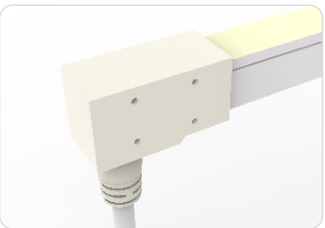
Injection-moulded End Cap

Pre-installed termination protection of the light, IP67.



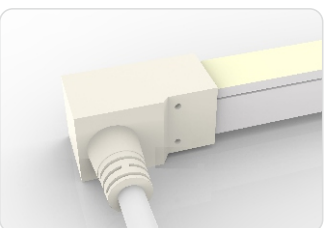
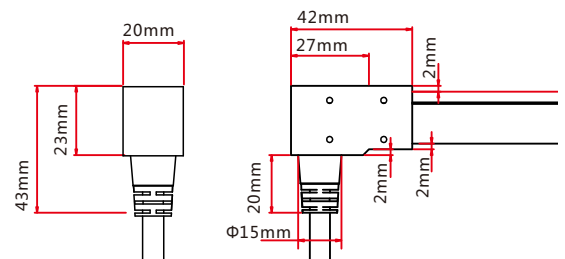
3.2 Dual Injection-moulded Connector

Note: Unless otherwise stated, the tolerance of the connector is $\pm 0.5\text{mm}$.



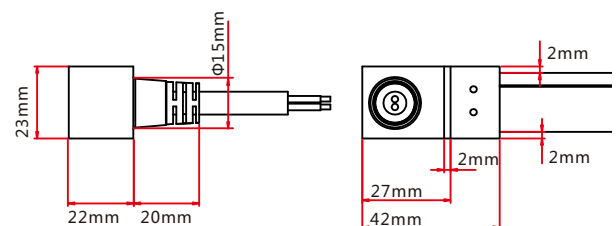
Dual Injection-moulded Front Connector (bottom)

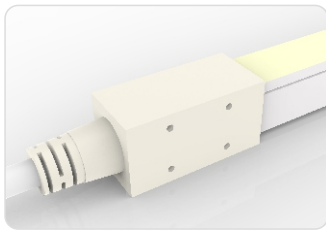
Connects light to power supply with pre-installed bottom feed cable, IP68. Cable length available in 0.3m, 1m, 3m, 5m, 10m, 15m, 20m.



Dual Injection-moulded Front Connector (side)

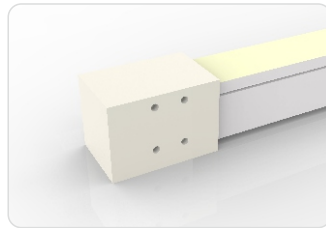
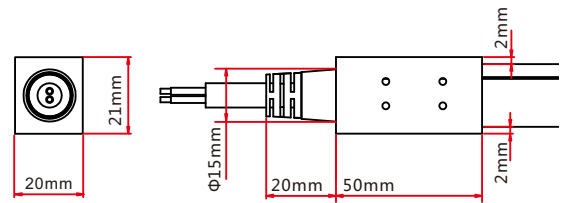
Connects light to power supply with pre-installed side feed cable, IP68. Cable length available in 0.3m, 1m, 3m, 5m, 10m, 15m, 20m.





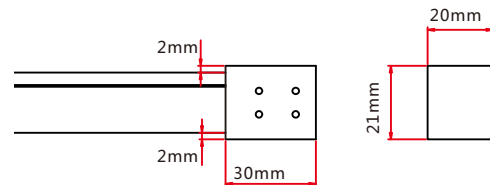
Dual Injection-moulded Front Connector (top end)

Connects light to power supply with pre-installed end feed cable, IP68. Cable length available in 0.3m, 1m, 3m, 5m, 10m, 15m, 20m.



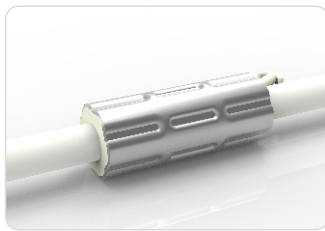
Dual Injection-moulded End Cap

Pre-installed termination protection of the light, IP68.



3.3 Anti-wicking Ferrule

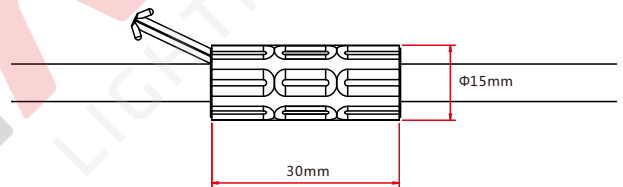
Note: Unless otherwise stated, the tolerance is $\pm 0.5\text{mm}$.



Anti-wicking Ferrule

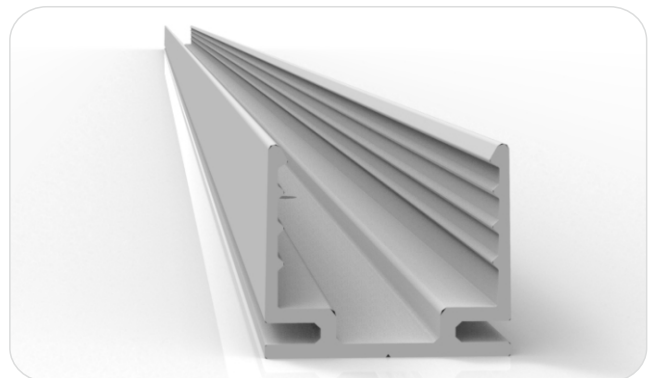
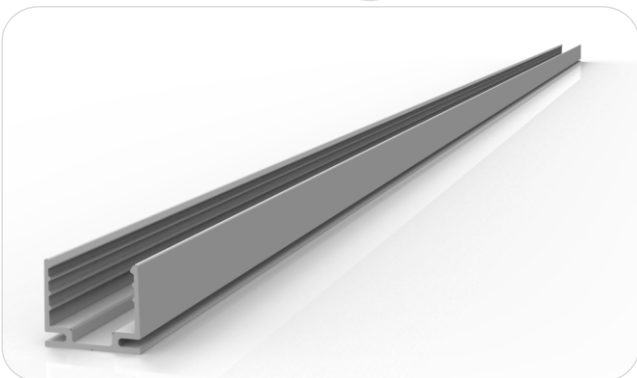
The anti-wicking ferrule is located at 115mm ($\pm 5\text{mm}$ tolerance) from the connector on the cable.

For protection against water ingress from inside of cable wire and hence damage the light.

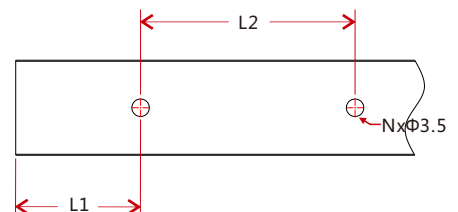
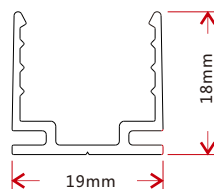
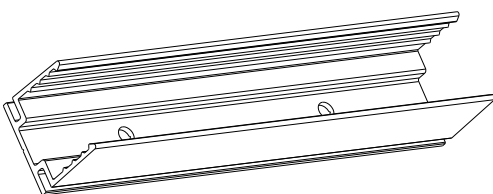


4. Mounting Profile

4.1 Standard Aluminum Profile



Dimensions Note: Unless otherwise stated, the tolerance of the profile is $\pm 0.5\text{mm}$.

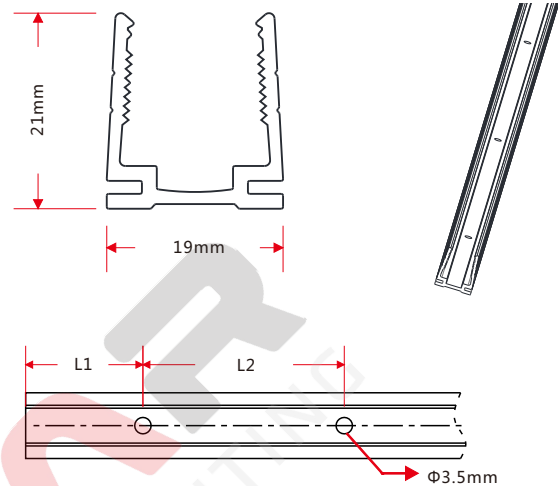


Model	W*H(mm)	Standard Length (mm)	L1 (mm)	L2 (mm)	Screw Hole (mm)	Hole Number	For Product
F22-A/PL	19*18	35	17.5	/	Φ3.5	1	F22
		500	50	200	Φ3.5	3	F22
		1000	100	200	Φ3.5	5	F22
		2000	100	200	Φ3.5	10	F22

4.2 Plastic Profile

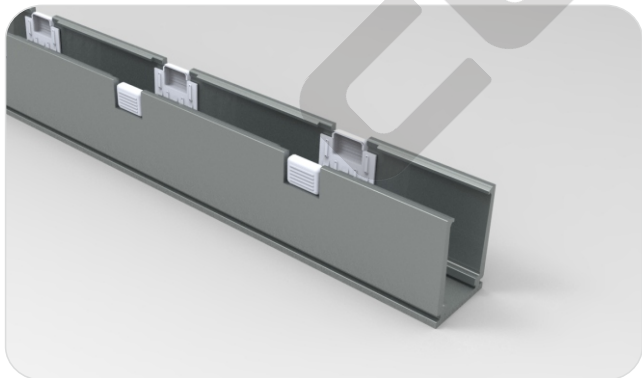


Note: Unless otherwise stated, the tolerance of the profile is $\pm 0.5\text{mm}$.

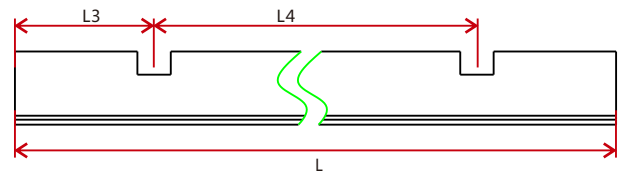
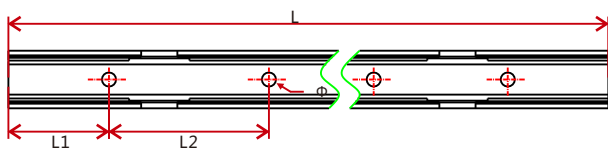
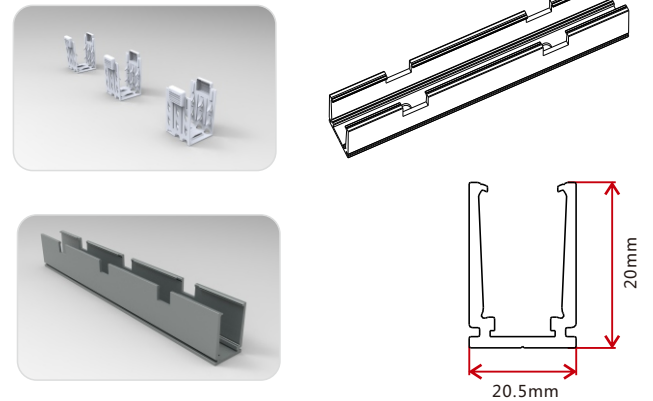


Model	W*H(mm)	Standard Length (mm)	L1 (mm)	L2 (mm)	Screw Hole (mm)	Hole Number	For Product
F22-PC/PL	19*21	500	50	200	Φ3.5	3	F22
		1000	100	200	Φ3.5	5	F22
		2000	100	200	Φ3.5	10	F22

4.3 Self-locking Aluminum Profile (Using with the Clip)

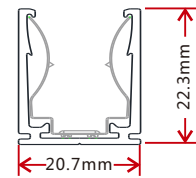
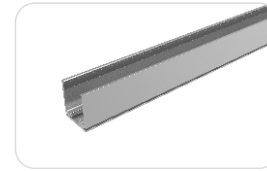


Note: Unless otherwise stated, the tolerance of the profile is $\pm 0.5\text{mm}$.

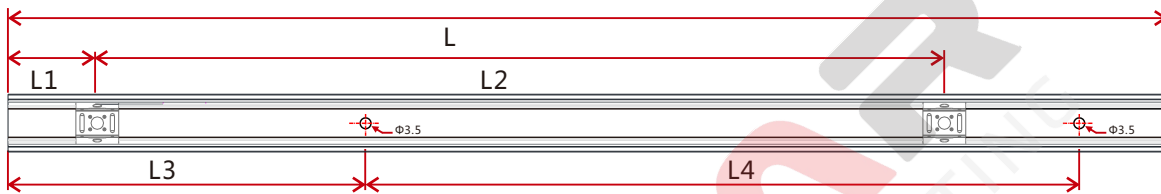


Model	W*H(mm)	Standard Length(mm)	L1(mm)	L2(mm)	L3(mm)	L4(mm)	Hole Screw(mm)	Hole Number	Clip Number
F22-SLA/PL	20.5*20	35	17.5	25	5	/	Φ3.5	2	1
		500	50	200	75	350	Φ3.5	3	2
		1000	100	200	150	350	Φ3.5	5	3
		2000	100	200	125	350	Φ3.5	10	6

4.4 Self-locking Aluminum Profile Ver 2.0 (Using with the Clip)

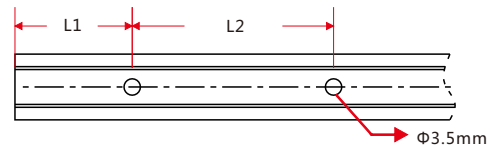
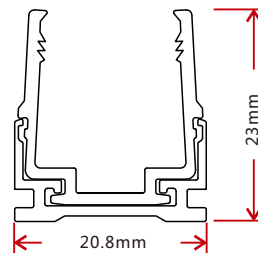
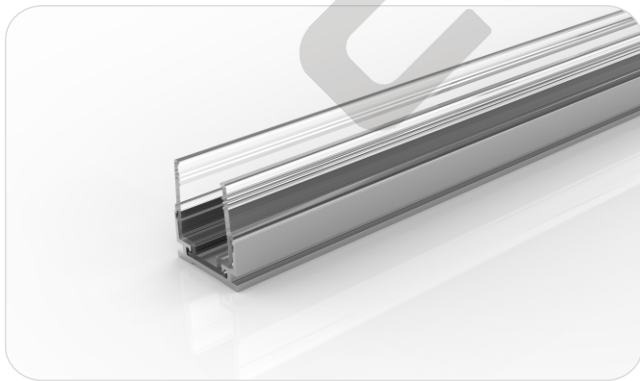


Note: Unless otherwise stated, the tolerance of the profile is $\pm 0.5\text{mm}$.



Model	W*H(mm)	Standard Length(mm)	L1(mm)	L2(mm)	L3(mm)	L4(mm)	Hole Screw(mm)	Hole Number	Clip Number
F22-SLA/PL2	20.7*22.3	35	17.5	/	5	25	Φ3.5	2	1
		500	25	150	50	200	Φ3.5	3	4
		1000	25	190	100	200	Φ3.5	5	6
		2000	25	195	100	200	Φ3.5	10	11

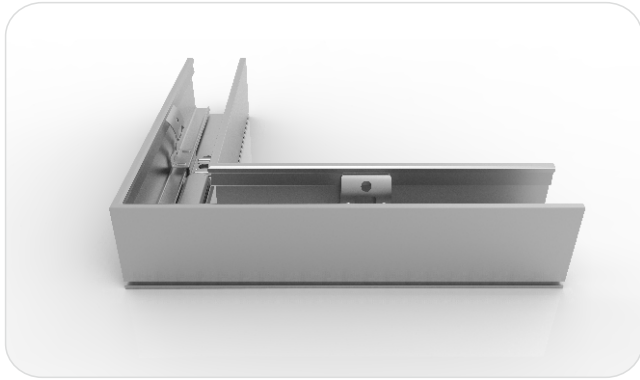
4.5 Plastic & Aluminum Combination Profile



Note: Unless otherwise stated, the tolerance of the profile is $\pm 0.5\text{mm}$.

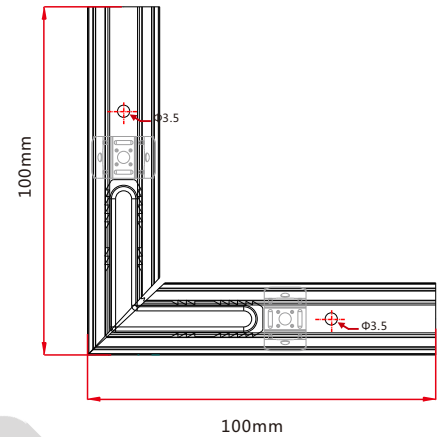
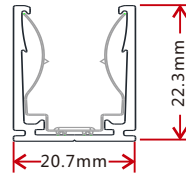
Model	W*H(mm)	Standard Length (mm)	L1 (mm)	L2 (mm)	Screw Hole (mm)	Hole Number	For Product
F22-PA/PL	20.8*23	35	17.5	/	Φ3.5	1	F22
		500	50	200	Φ3.5	3	F22
		1000	100	200	Φ3.5	5	F22
		2000	100	200	Φ3.5	10	F22

4.6 L Shape Self-locking Aluminum Profile Ver. 2 (Using with the Clip)

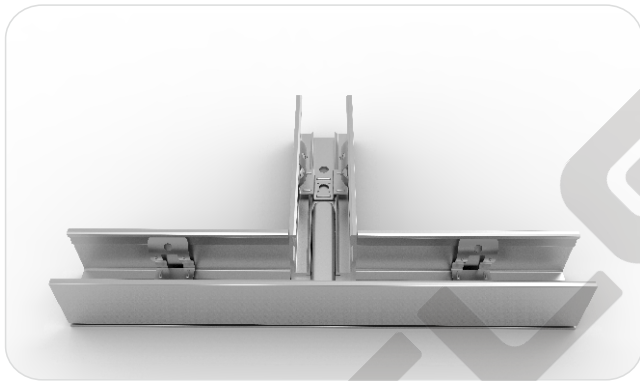


Model: F22-SLA/PL2-L

Note: Unless otherwise stated, the tolerance of the profile is $\pm 0.5\text{mm}$.

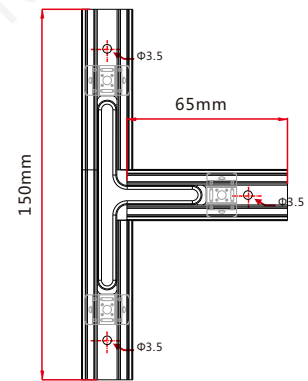
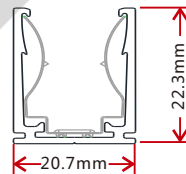


4.7 T Shape Self-locking Aluminum Profile Ver. 2 (Using with the Clip)



Model: F22-SLA/PL2-T

Note: Unless otherwise stated, the tolerance of the profile is $\pm 0.5\text{mm}$.

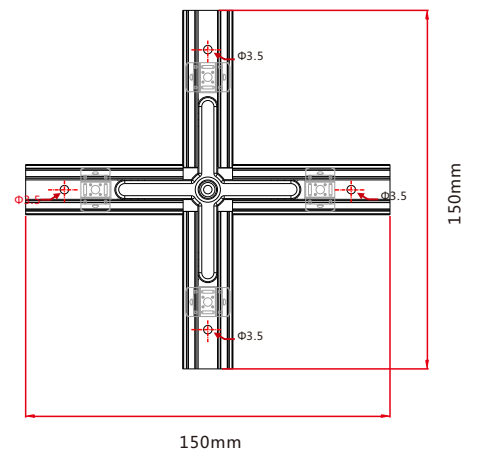
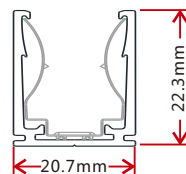


4.8 X Shape Self-locking Aluminum Profile Ver. 2 (Using with the Clip)

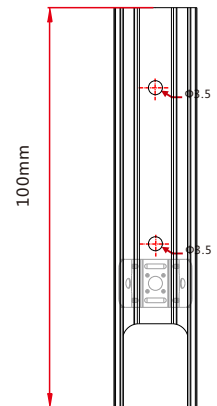
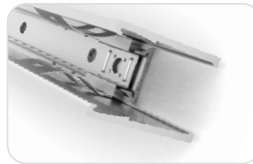
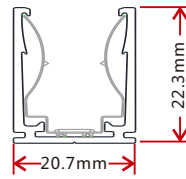
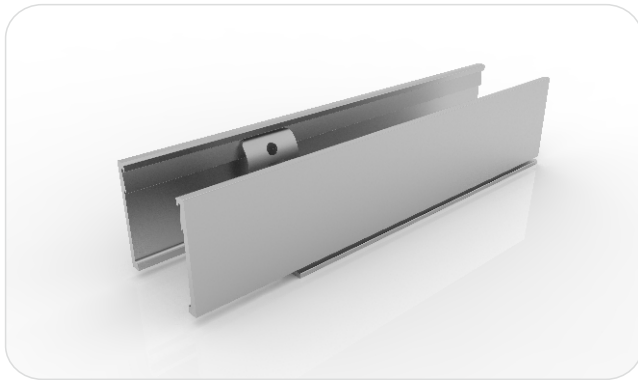


Model: F22-SLA/PL2-X

Note: Unless otherwise stated, the tolerance of the profile is $\pm 0.5\text{mm}$.



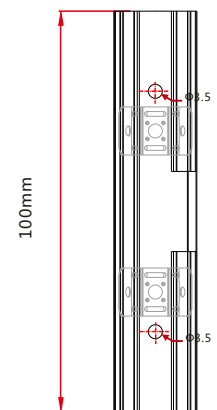
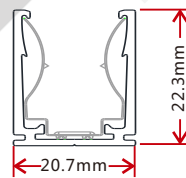
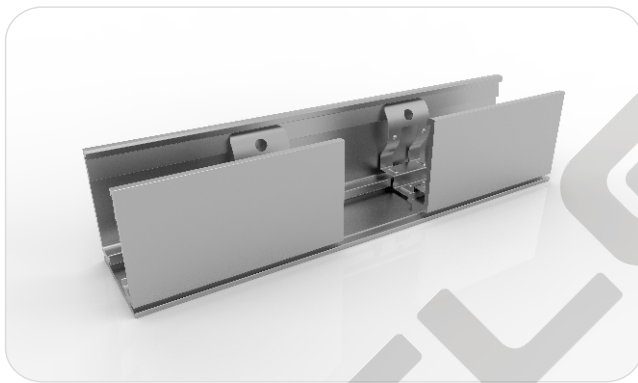
4.9 Self-locking Aluminum Profile Ver. 2, Bottom Feed (Using with the Clip)



Model: F22-SLA/PL2-B

Note: Unless otherwise stated, the tolerance of the profile is $\pm 0.5\text{mm}$.

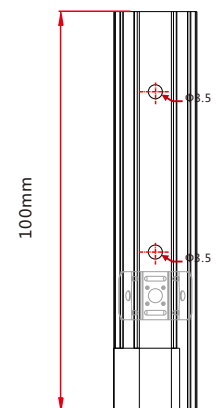
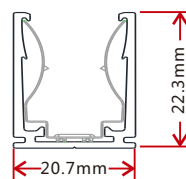
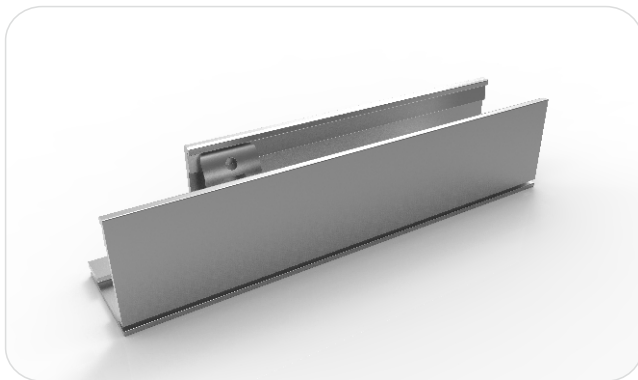
4.10 Self-locking Aluminum Profile Ver. 2, Middle Feed (Using with the Clip)



Model: F22-SLA/PL2-M

Note: Unless otherwise stated, the tolerance of the profile is $\pm 0.5\text{mm}$.

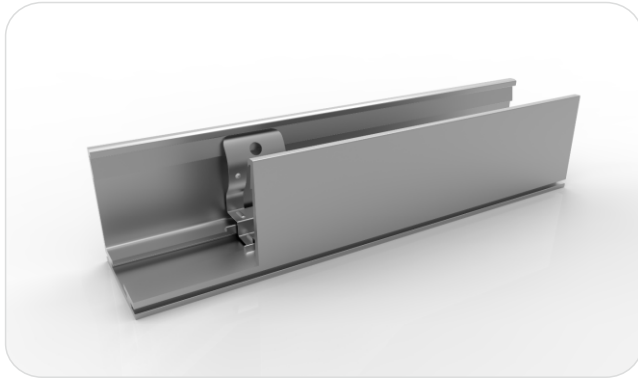
4.11 Self-locking Aluminum Profile Ver. 2, Side Feed From Left (Using with the Clip)



Model: F22-SLA/PL2-SL

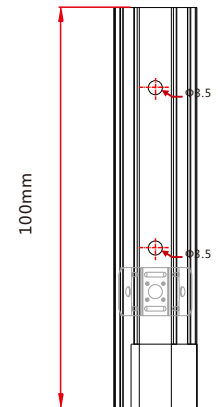
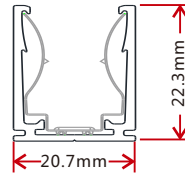
Note: Unless otherwise stated, the tolerance of the profile is $\pm 0.5\text{mm}$.

4.12 Self-locking Aluminum Profile Ver. 2, Side Feed From Right (Using with the Clip)

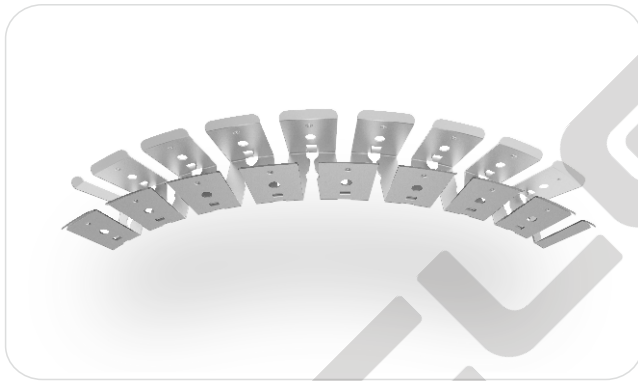


Model: F22-SLA/PL2-SR

Note: Unless otherwise stated, the tolerance of the profile is $\pm 0.5\text{mm}$.

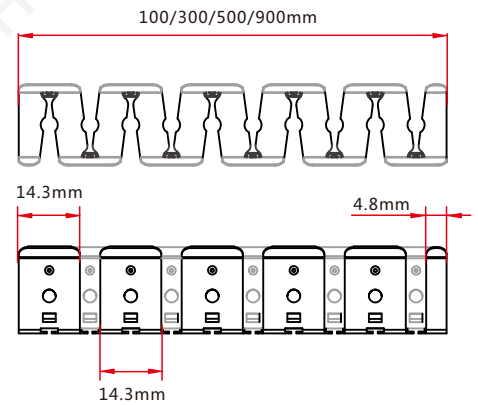
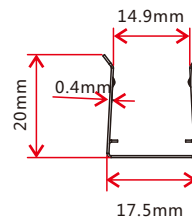


4.13 Curve Stainless Steel Profile



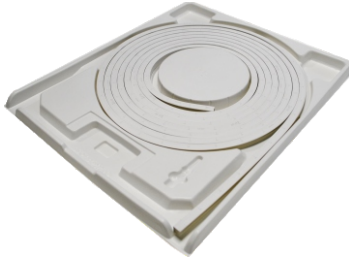
Model: F22-CS/PL

Note: Unless otherwise stated, the tolerance of the profile is $\pm 0.5\text{mm}$.

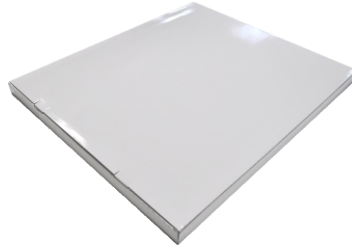


5.Packaging

Packaging Method



Plastic Plate



White Box



Carton



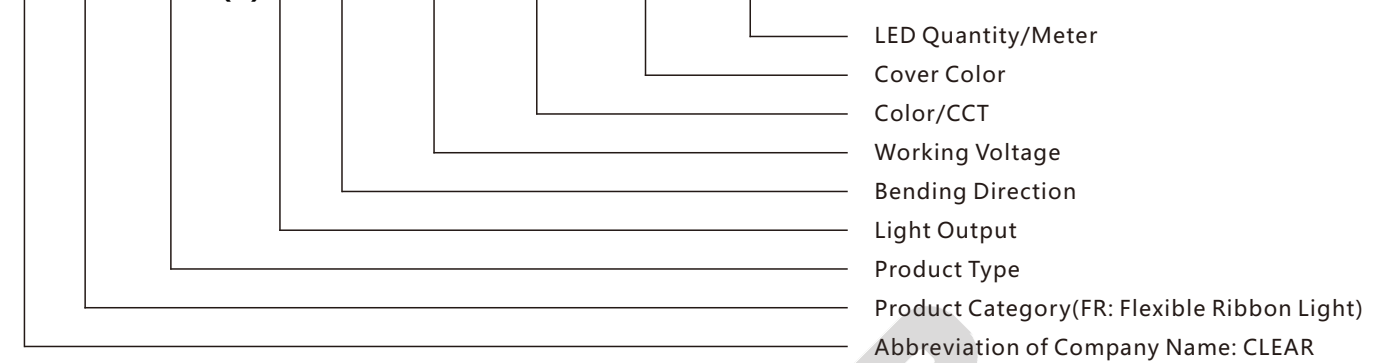
Packaging Detail

Light Length	White Box Dimension (cm)	Carton Dimension (cm)	Numbers of White Box	Carton Weight (kg)
<4.5m	39*5.2*50	52*41*28	5	<8
5-8m	51*5.2*62	64*53*17.5	3	6-9
5-8m	51*5.2*62	64*53*28	5	9-14
10m	60*3.7*71	73*62*20	5	17
15m	68*5.2*79	81*70*12.5	2	11

6. Appendix

6.1 Product Naming Convention

C-FR-XXX(-)X-XX-XXX-XXX-XXX-XXX



For Example: C-FR-ProF22A-VB-24CC-RGB-WM-72

6.2 Certificate

Certificating Type	Testing Organization	Certificate Serial Number	Report Reference
UL 2108	UL	20160726-E360029	E360029-20130322
CE-EMC	SGS	SZEM1702001259LMV	SZEM160600421302

6.3 Third-Party Test Report

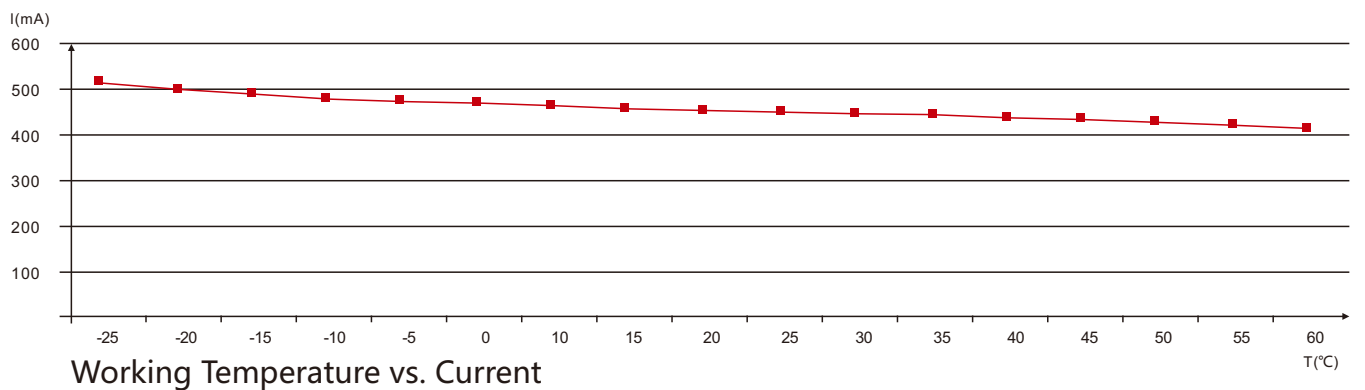
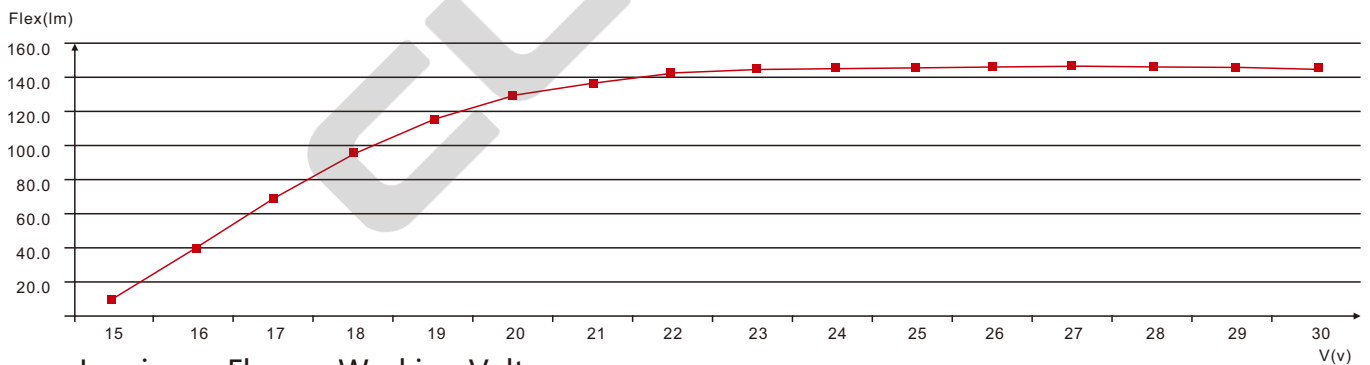
Testing Item	Testing Organization	Report Number
RoHS	SGS	CANEC1202163502 A01
IP68: Screw type	TUV SUD	68.140.12.136.02
IP68: Clasp type	SGS	GZES140200135301
		GZES140200135401
		GZES140200135501
		GZES140200135701
		GZES140200135801
IPX8: Molding type	SGS	SZES141200357301
		SZES141200357401
		SZES141200357501
IPX8: Snap type	SGS	GZES160600792031
Flame retardant	TUV SUD	68.140.13.068.01
UV@340nm: Light	AOV	A002R130308065—1R01
UV@340nm: PVC	AOV	A002R130308065—2R01

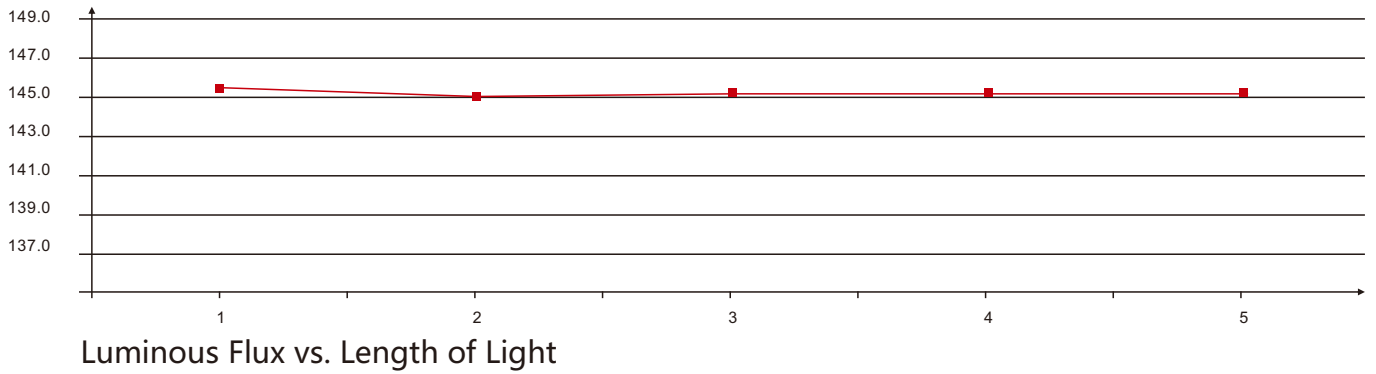
>>Note: The testing reports and certificates are available from the related official website.

6.4 Reliability Test of Light

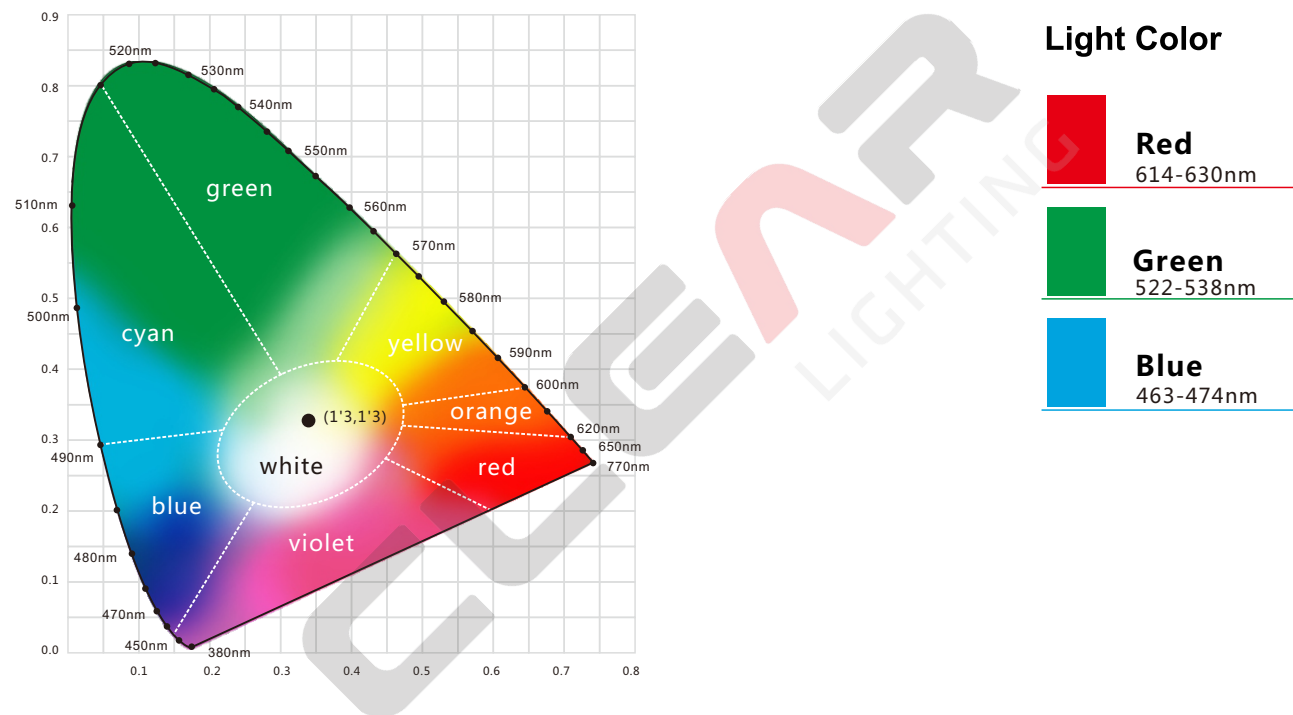
TESTING ITEM	PERFORMANCE	STANDARD/REFERENCE VALUE/DESCRIPTION
PHOTOMETRIC TESTING	Spectrum Analysis	IES LM 79 (lumen, CCT, CRI, XY, SDCM, wave length)
	Photometric Distribution	IES LM 79(lumen intensity distribution & Lux diagram)
	Lumen Maintenance & Life Time	IES LM84 & IES TM28
TEMPERATURE RISE TESTING	Normal Temperature Test	UL1598 & UL2388 & IEC60598-1 & IEC60598-2-21
	Abnormal Operation Test	UL1598 & UL2388 & IEC60598-1 & IEC60598-2-21
MECHANICS & PHYSICS TESTING	Bending Test	Manufacturer-defined, 500 cycles
	Swing Test	UL2388, >750 cycles
	Tensile Test	Manufacturer-defined, > the weight of light in
	Twist Test	maximum connection length with both ends feed
	Ball Impact	Manufacturer-defined, >200 cycles
	IK07 IK08	UL1598 & UL2388 & IEC60598-1 & IEC60598-2-21 IEC62262
WEATHERING TESTING	Swimming Pool Water Immersion Test	GB9667, PH6.8-7.6, free chlorine 0.3-0.6mg/L
	Sea Water Immersion Test	IEC60598-1, Salinity 4%
	Salt Spray Test	IEC68-2-11
	Outdoor Exposure	Manufacturer-defined
ENVIROMENT TESTING	Flame Resistant Test	UL94
	UV Exposure Test	ASTMG 154 , ISO 4892-3 , UVA@340nm
	IPX5 IPX6 IPX7 IPX8	IEC60529
ENDURANCE & THERMAL TEST LAB	Temperature Shock Test	Manufacturer-defined , -40°C-60°C (typical temperature range)
	Constant Temperature Test	Manufacturer-defined , 70°C (typical temperature)

6.5 Figures of Typical Characteristics

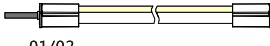
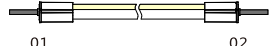




6.6 Wavelength of Color Light



6.7 Loading Chart

Type.	Rated Power /mtr	Power Supply									
		35w	60w	75w	80w	100w	120w	150w	185w	240w	320w
F22	6.5w/7.2w/8w	3m	6m	7.5m	8m	10m	12m	15m	18m	24m	30m
	10.6w/11w/12w	2m	3.5m	4.5m	5m	6m	7m	10m	12m	14m	20m
Energizing way		DC input  01/02					DC input  01 02 DC input				

Note : 1. These are the light maximum recommended running length subject to selected power supply.
 2. For example: It is recommended to use one 80W power supply loading maximum 8m light (7.2w/m) or maximum 5m light (12w/m) by energizing the light one end.