

# Aluminium profile GARliano flex

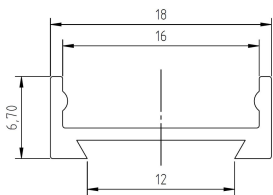
- high-quality profile made of aluminium, raw
- high flexibility: The GARliano flex can be deformed to a minimum bending radius of 250 mm
- can be used as surface-mounted profile on curved surfaces
- very flat installation height, therefore particularly suitable for small spaces



Please refer to the notes on expansion and assembly at the end of the data sheet!

## ALUMINIUM PROFILE

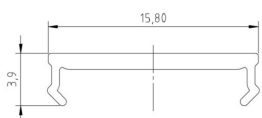
	62399421	62399422	62399423	62399425
<b>Description</b>	GARliano flex aluminium profile, not anodized			
<b>Length</b>	1000 mm	2010 mm	3020 mm	5030 mm
<b>Width</b>	18 mm			
<b>Height</b>	6,7 mm			
<b>Material</b>	Aluminium EN AW 6060			



## COVER

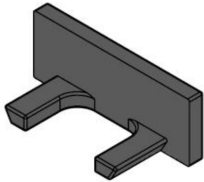
	62398201	62398211	62398221
<b>Description</b>	Plastic cover flat, clear, PMMA, for maximum light yield and protection of the LED strip	Plastic cover flat, frosted white, PMMA, for a glare-free light distribution and concealment of the technology	Plastic cover flat, satined, PMMA, for a diffused light distribution and concealment of the technology
<b>Material</b>	PMMA		
<b>Length</b>	1000 mm		
<b>Width</b>	15,6 mm		
<b>Height</b>	3,8 mm		
<b>Weight</b>	23 gr		

For other lengths please replace the last digit of the article number by: 2 = 2.01m / 3 = 3.02m / 5 = 5.03m



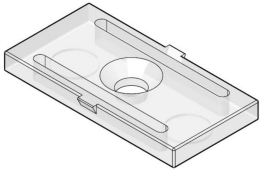
## END CAPS

	<b>62399420</b>
<b>Description</b>	GARliano flex end caps, 2 pieces, screwless
<b>Material</b>	Plastics
<b>Width</b>	18 mm
<b>Height</b>	6,7 mm
<b>Remarks</b>	Material Polyamid 6



## MOUNTING CLIPS

	<b>62399419</b>
<b>Description</b>	GARliano flex mounting clips, 2 clips, 4 screws
<b>Material</b>	Plastics
<b>Length</b>	24,1 mm
<b>Width</b>	12,1 mm
<b>Remarks</b>	Material Polycarbonat



Please note that the materials aluminum and PMMA can expand when the temperature changes vary greatly. With a temperature change of 20°C the expansion difference can be up to 1.2 mm per meter! This is no deficiency of the product but a normal physical process.

Installation note: If you directly install two aluminum profiles edge to edge (without end caps), please pay attention during installation, that you don't glue the LED strip directly over the joint, since the profiles at temperature fluctuations - especially at large lengths - will expand/contract (s. section 1) and then the LED tape may be damaged. At joints the LED strip has to be cut at the marked positions and reconnected with flexible solder bridges with corresponding expansion reserve (min. 5mm).