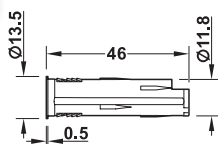


Sensor switches

Häfele Loox sensor switch, modular – touchless, soft on/off switching

TOUCHLESS



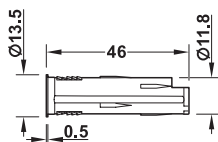
- > Material/colour: Plastic, silver coloured
- > Degree of protection: IP20
- > Sensor range: 0–80 mm
- > Power consumption: ≤ 0.3 W
- > Drill hole \varnothing : 12 mm
- > Supplied with: 1 switch

	Cat. No.
Sensor switch, modular	833.89.127

- Please order lead with snap-in connector for modular switches driver separately. Length 2 m: Cat. No. 833.89.142. See page 91

- On/off state is stored without the need for power supply (memory function).

Häfele Loox door sensor switch, modular – soft on/off switching

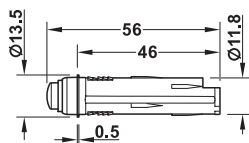


- > Material/colour: Plastic, silver coloured
- > Degree of protection: IP20
- > Sensor range: 0–100 mm
- > Power consumption: ≤ 0.3 W
- > Drill hole \varnothing : 12 mm
- > Supplied with: 1 switch

	Cat. No.
Door sensor switch, modular	833.89.128

- Please order lead with snap-in connector for modular switches driver separately. Length 2 m: Cat. No. 833.89.142. See page 91

Häfele Loox motion detector, modular – automatic on/off switching



- > Material/colour: Plastic, silver coloured
- > Degree of protection: IP20
- > Sensor range: 0–3000 mm
- > Sensor angle: 120 °
- > Power consumption: ≤ 0.1 W
- > Delay time: 30 sec.
- > Drill hole \varnothing : 12 mm
- > Supplied with: 1 motion detector

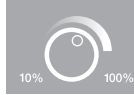
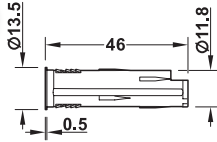
	Cat. No.
Motion detector, modular	833.89.129

- Please order lead with snap-in connector for modular switches driver separately. Length 2 m: Cat. No. 833.89.142. See page 91

Sensor switches

Häfele Loox dimmer, modular – automatic on/off switching

WITH TOUCH/
TOUCHLESS



- > Material/colour: Plastic, silver coloured
- > Degree of protection: IP20
- > Power consumption: ≤0.3 W
- > Drill hole Ø: 12 mm
- > Supplied with: 1 dimmer

	Sensor range	Cat. No.
With touch	–	833.89.058
Touchless	0–60 mm	833.89.126

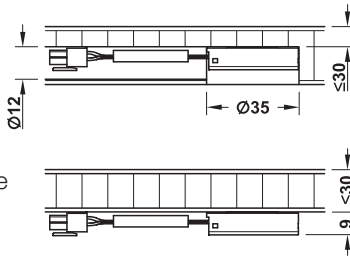
+ Please order lead with snap-in connector for modular switches driver separately. Length 2 m: Cat. No. 833.89.142. See page 91

! Dimming value is stored without the need for voltage supply (memory function)

Häfele Loox capacitive switch/dimmer, modular – touchless on/off switching and dimming



This completely invisible operating solution opens up completely new possibilities in continuously adjustable light control.



- > Manual operation (proximity sensor), memory function
- > Concealed installation in wood, glass or stone (not in metalliferous materials) at a maximum depth of 30 mm
- > For screw fixing or recess mounting (drill hole Ø 35 mm)
- > A distance of min. 500 mm to electromagnetic fields (power lines, microwave) must be adhered to.

- > Material/colour: Plastic, silver coloured
- > Diameter: 35 mm
- > Height: 10 mm
- > Degree of protection: IP20
- > Power consumption: ≤1 W
- > Supplied with: 1 switch

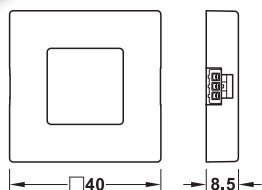
	Cat. No.
Capacitive switch/dimmer, modular	833.89.133

+ Please order lead with snap-in connector for modular switches driver separately. Length 2 m: Cat. No. 833.89.142. See page 91

Sensor switches

Häfele Loox Sensor switch, surface mounted modular – touchless, soft on/off switching

TOUCHLESS



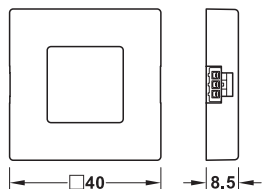
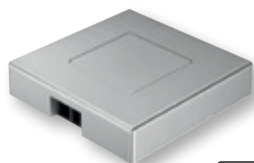
- > Material/colour: Plastic, silver coloured
- > Dim. (L x W x H): 40 x 40 x 8.5 mm
- > Degree of protection: IP20
- > Sensor range: 0–80 mm
- > Power consumption: ≤0.3 W
- > Supplied with: 1 switch with fixing material

	Cat. No.
Sensor switch, surface mounted modular	833.89.136

- + Please order lead with snap-in connector for modular switches driver separately. Length 2 m: Cat. No. 833.89.142. See page 91

- ! On/off state is stored without the need for power supply (memory function).

Häfele Loox Door sensor switch, surface mounted modular – soft on/off switching



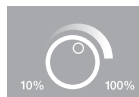
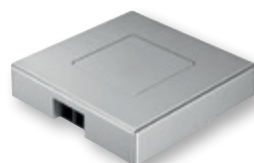
- > Material/colour: Plastic, silver coloured
- > Dim. (L x W x H): 40 x 40 x 8.5 mm
- > Degree of protection: IP20
- > Sensor range: 0–100 mm
- > Power consumption: ≤0.3 W
- > Supplied with: 1 switch with fixing material

	Cat. No.
Door sensor switch, surface mounted	833.89.137

- + Please order lead with snap-in connector for modular switches driver separately. Length 2 m: Cat. No. 833.89.142. See page 91

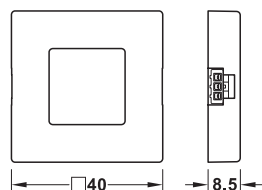
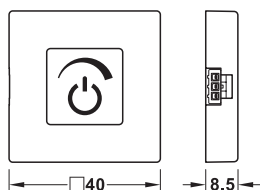
Häfele Loox Dimmer, surface mounted modular – soft on/off switching and dimming

WITH TOUCH/
TOUCHLESS



With touch function

Touchless



- > Material/colour: Plastic, silver coloured
- > Dim. (L x W x H): 40 x 40 x 8.5 mm
- > Degree of protection: IP20
- > Sensor range: 0–100 mm
- > Power consumption: ≤0.3 W
- > Supplied with: 1 switch with fixing material

	Sensor range	Cat. No.
With touch	–	833.89.134
Touchless	0–80 mm	833.89.135

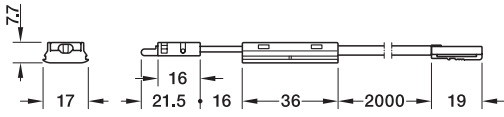
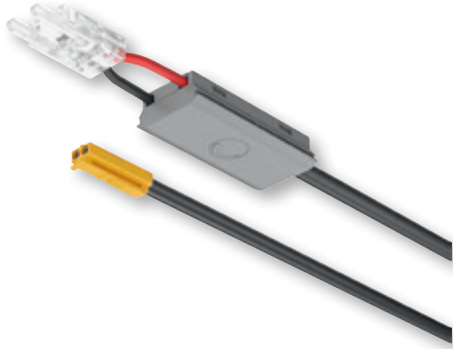
- + Please order lead with snap-in connector for modular switches driver separately. Length 2 m: Cat. No. 833.89.142. See page 91

- ! Dimming value is stored without the need for voltage supply (memory function)

Sensor switches

For monochrome 8 mm LED strip lights in aluminium profiles

Loox5 aluminium profile dimmer – soft on/off switching with dimming



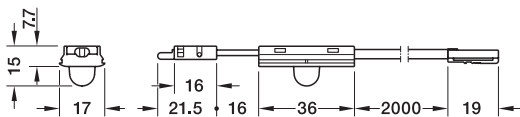
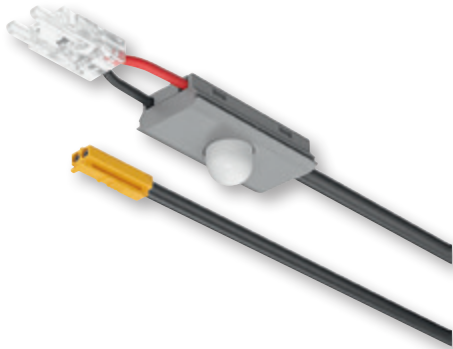
- > Area of application: For monochrome 8 mm Loox5 LED strip lights in aluminium profiles with 16 mm internal width
- > Material/colour: Plastic, silver coloured
- > Drill hole Ø: Plug 8 mm
- > Mounting: For push fitting into aluminium profile
- > Supplied with: 1 switch with clip/plug and 2 m lead

Voltage	Max. connected wattage W	Cat. No.
5 12V	60	833.95.751
5 24V	90	833.77.836

! Dimming value is stored without the need for voltage supply (memory function)

➔ Aluminium profile with 16 mm internal width see page 22 and page 28

Loox5 aluminium profile motion detector – automatic on/off switching



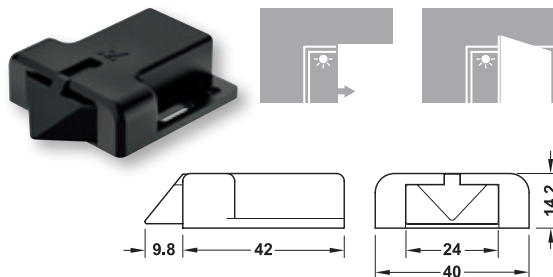
- > Area of application: For monochrome 8 mm Loox5 LED strip lights in aluminium profiles with 16 mm internal width.
- > Material/colour: Plastic, silver coloured
- > Drill hole Ø: Plug 8 mm
- > Mounting: For push fitting into aluminium profile
- > Sensor range: 0–3000 mm
- > Delay time: 30 sec.
- > Supplied with: 1 switch with clip/plug and 2 m lead

Voltage	Max. connected wattage W	Cat. No.
5 12V	60	833.95.750
5 24V	90	833.77.835

➔ Aluminium profile with 16 mm internal width see page 22 and page 28

Mechanical switches

Häfele Loox universal door contact switch, modular – on/off switching



The universal door contact switch is suitable for hinged doors or single-leaf sliding doors.

- > Material/colour: Plastic, black
- > Degree of protection: IP20
- > Supplied with: 1 switch with fixing material

Length x width mm	Height mm	Cat. No.
51.8 x 40	14.2	833.89.143

- + Please order lead with snap-in connector for modular switches driver separately. Length 2 m: Cat. No. 833.89.142.

Häfele Loox lead with snap-in connector for modular switches



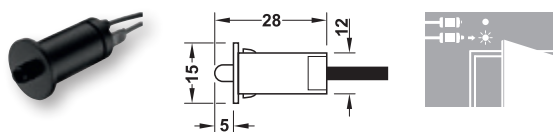
- > Degree of protection: IP20
- > Supplied with: 1 lead

Material/colour:	Length mm	Cat. No.
Plastic, black	500 mm	833.89.140
	1000 mm	833.89.141
	2000 mm	833.89.142

- + Required for modular switches

- ! Drill hole Ø for plug: 12 mm

Häfele Loox door contact switch – on/off switching

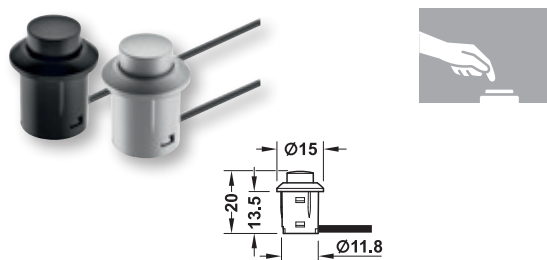


- > Degree of protection: IP20
- > Drill hole Ø: 12 mm
- > Supplied with: 1 switch with 2 m lead

Material/colour	Length mm	Cat. No.
Plastic, black	28	833.89.059

- ! Drill hole Ø for plug: 12 mm

Häfele Loox push switch – on/off switching



- > Drill hole Ø: 12 mm
- > Supplied with: 1 switch with 2 m lead

Material/colour:	Length mm	Cat. No.
Plastic, black	20	833.89.108
Plastic, grey		833.89.107

- ! Drill hole Ø for plug: 12 mm