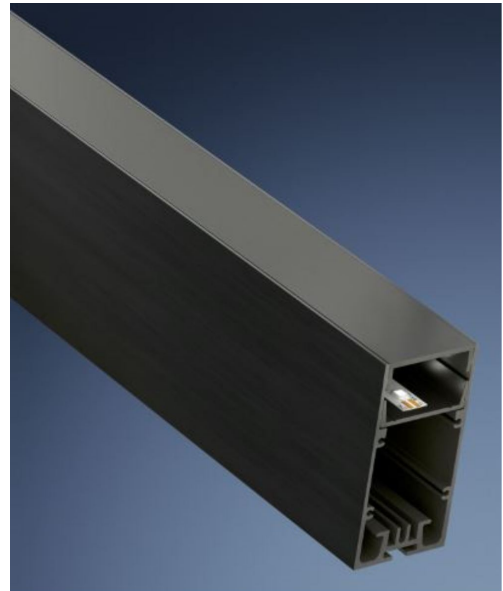


CATania 3060 Blackline

Aluminium profile black anodised

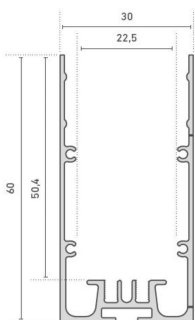
- high-quality profile made of aluminium, black anodised
- can be used flexibly as a surface-mounted or luminaire profile
- also available with black cover for design-relevant projects
- power supplies 66000315 and 66000316 integrable
- in combination with opal black or opal white diffusers and the matching LEDlight flex (up to pitch 15), a homogeneous light line is possible



Please refer to the notes on expansion and assembly at the end of the data sheet!

ALUMINIUM PROFILE

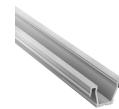
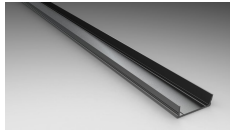
	62398771	62398772	62398773	62398775
Length	1000 mm	2010 mm	3020 mm	5030 mm
Width	30 mm			
Height	60 mm			
Colour	schwarz			
Material	Aluminium EN AW 6060			
Finish	anodised			
Weight	742 gr	1484 gr	2226 gr	3710 gr



INLAY

	62398781	62398831	62398841	62398881
Description	CATania 30 insertion profile, aluminium, black anodised, for LED boards with a max. width of 23.5 mm	CATania 30 insert profile for mounting of LEDlight flex series, combinable with GARgano covers	CATania insert profile, asymmetrical, for mounting the LEDlight flex family, combinable with GARliano covers, light deflection 14°	CATania insert profile, symmetrical, for mounting the LEDlight flex family, combinable with GARliano covers
Material	Aluminium EN AW 6060			
Finish	anodised			
Length	1000 mm			
Width	27,4 mm			
Height	7,9 mm	9,3 mm	17,91 mm	17,5 mm
Weight	129 gr	185 gr	180 gr	100 gr

For other lengths please replace the last digit of the article number by: 2 = 2.01m / 3 = 3.02m / 5 = 5.03m



COVER

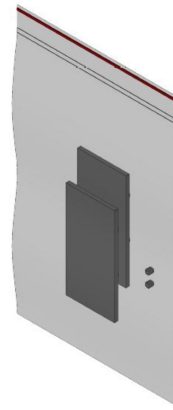
	62398851	62399691	62399821	62399841	62399851	62399861	62399871
Description	anodised aluminium cover	CATania 30 cover black, PMMA	cover opal white, PMMA, for a homogenous and glare-free light distribution	high plastic cover, opal white, 180° for an all round homogenous light emission	cover nature, little light consumption and hiding technical view at the same time	cover clear, for the protection of the LED stripe	prisma cover to reduce the dazzling effect
Material	Aluminium	PMMA					
Transmission in %		Ca. 22	77		84	91	
Length	1000 mm						
Width	27,4 mm			30 mm	27,4 mm		
Height	7,9 mm		7 mm	27,8 mm	7,9 mm		
Weight	130 gr	45 gr	69 gr	155 gr	69 gr	75 gr	60 gr

For other lengths please replace the last digit of the article number by: 2 = 2.01m / 3 = 3.02m / 5 = 5.03m



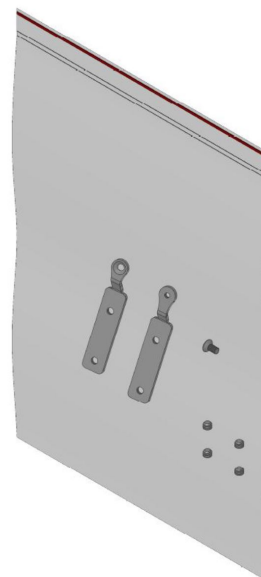
END CAPS

	62398777
Description	CATania 3060 end caps, screwless visible surface, aluminium, black anodised, 2 pcs, incl. 2 grub screws
Material	Aluminium EN AW 5052
Length	2 mm
Width	30 mm
Height	60 mm
Weight	36 gr



ACCESSORIES

	62398802	62398803	62398806	65400170
Description	2x straight connectors, metal, incl. 8 grub screws	2x connectors, 90° angle, metal, incl. 8 grub screws	profile connector set adjustable, 304 stainless steel, 2 pieces, incl. grub screws, for an angled light line	suspension for ceiling installation (2x 150 cm wire cable Ø 1 mm, 2x suspension brackets, 2x profile brackets)
Material			304 stainless steel	
Length	80 mm	50,5 mm		
Width	10,5 mm	50,5 mm		
Height	1,7 mm			
Weight	28 gr	31 gr	16 gr	36 gr
Remarks				Workload: 8 kg/bracket (16 kg/set)



All aluminium profiles and covers are subject to certain length tolerances. This is +20/-0 mm irrespective of the length, i.e. a profile has at least the specified length, but can be up to 20 mm longer.

If you require an exact length, please specify this when ordering (article number 62397000).

Please note that the materials aluminum and PMMA can expand when the temperature changes vary greatly. With a temperature change of 20°C the expansion difference can be up to 1.2 mm per meter! This is no deficiency of the product but a normal physical process.

Installation note: If you directly install two aluminum profiles edge to edge (without end caps), please pay attention during installation, that you don't glue the LED strip directly over the joint, since the profiles at temperature fluctuations - especially at large lengths - will expand/contract (s. section 1) and then the LED tape may be damaged. At joints the LED strip has to be cut at the marked positions and reconnected with flexible solder bridges with corresponding expansion reserve (min. 5mm).

Please note that damage to the surface (e.g. scratches) removes superficial anodising and the silver raw material becomes visible. Handling and assembly must be handled with due care.