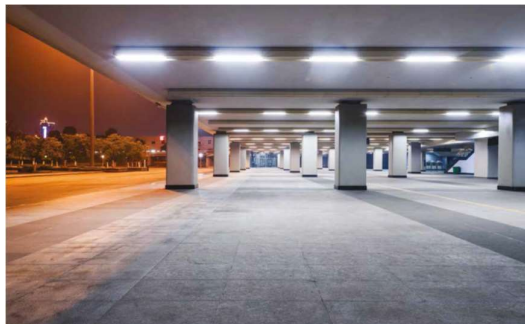




PRODUCT FEATURES

- No cable twisting during installation design
- Smooth and high transparency opal polycarbonate diffuser
- **Built-in** aluminium heatsink with excellent heat dissipation
- Even light distribution
- Loop in and loop out tool-less installation
- Loop through by 4 wires
- IP66 and IK08 rated
- M20 waterproof cable gland
- Workable with PIR Sensor Module with Interchange adaptor



APPLICATIONS

- Car parks
- Garages
- Workshops
- Warehouses
- Underground areas

GENERAL INFORMATION

Input Voltage / Frequency	220-240 VAC / 50-60Hz
Power Factor	> 0.9
Power Supply Unit	Integrated
Dimmable	No
CRI	≥ 80
Beam Angle	120°
Colour Consistency	SDCM ≤ 6
Lifetime	100000 hrs L70B50 at 25°C
Number of Switching Cycles	> 100000
IP	66
IK	08
Protection Class	II
Glow Wire	850°C
Photobiological Safety Group	RG 0
Flicker percentage	≤ 3% at 100Hz
Working Temperature	-30°C to +50°C
Material & Colour	Polycarbonate, SV16
Installation	Surface Mounted; Suspension with Hook [Wire not included]
Standards and Approvals	EN60598-1, EN60598-2-1, EN62493, EN62471, EN60598-2-24, EN55015; EN61547, EN61000-3-2, EN61000-3-3

PRODUCT INFORMATION

Model No.	MM Code	Power W	Luminous Flux lm	Luminous Efficacy lm/W	Color Temp. K
FOB77400v0	MM10967	17	2000	118	4000
FOB77500v0-ds	MM10968	17/33	2300 / 4000	121	4000
FOB77600v0-ds	MM10969	33/50	4000 / 6000	120	4000

OPTIONAL ACCESSORIES

Model No.	MM Code	Description
LA11155 + LA11197	710712 / MM10712	PIR Sensor Module+ Adapter

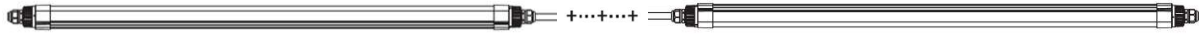


LA11155

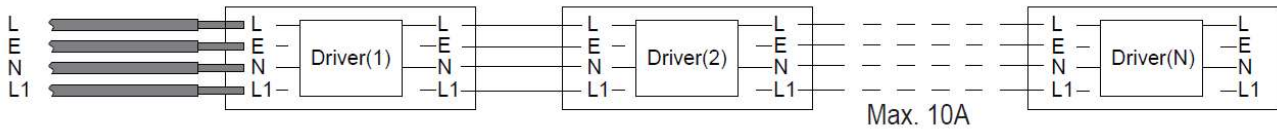
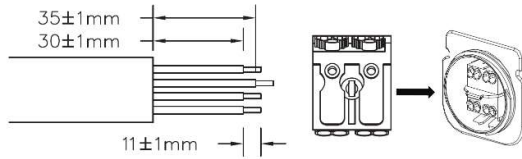


LA11197

WIRING DIAGRAM



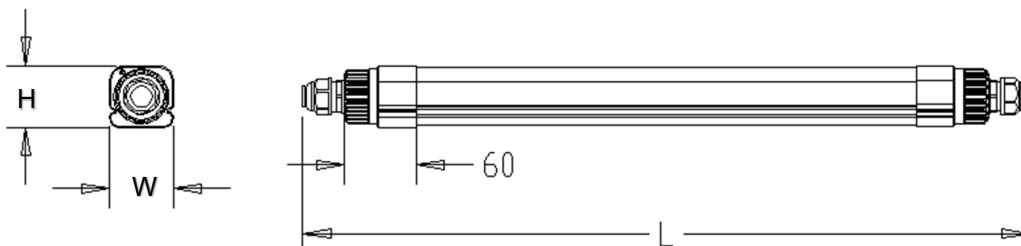
HAGON loop-in / loop-out installation (ON/OFF connection)



Model No.	Inrush Current A	Inrush Duration µs	Max. No. of Luminaire Connection on MCB			
			B10	B16	C10	C16
FOB77400v0	25.6	240	7	11	11	19
FOB77500v0-ds	24.2	350	6	10	10	16
FOB77600v0-ds	26.1	220	7	11	11	18

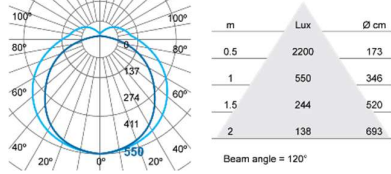
DIMENSIONS & WEIGHT

/Model No.	L Mm	W mm	H mm	Weight g
FOB77400v0	610	55	55	500
FOB77500v0-ds	1210	55	55	900
FOB77600v0-ds	1510	55	55	1080

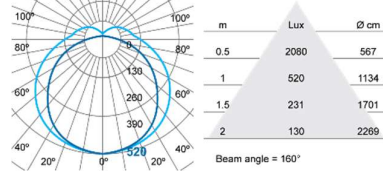


PHOTOMETRIC DIAGRAM

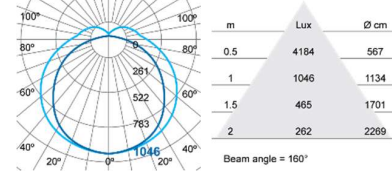
FOB77400v0-(17W)



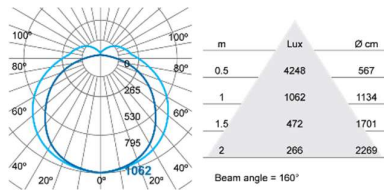
FOB77500v0-ds-(17W)



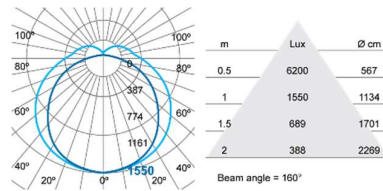
FOB77500v0-ds-(33W)



FOB77600v0-ds-(33W)



FOB77600v0-ds-(50W)



LOGISTIC INFORMATION

Model No.	Packaging Unit	Outer Box Dimensions			Gross Weight per Outer Box
		L	W	H	
	pcs/unit	mm	mm	mm	kg
FOB77400v0	18	637	374	204	11.6
FOB77500v0-ds	18	1237	374	204	19.4
FOB77600v0-ds	18	1537	374	204	22.7