

F22 Bail-latch Connector IP68



Recommended for

1. Water-related environments.
2. Underwater environments.
3. Uncertain breakdown lengths or on-site length adjustment.

Feature

It is a submersible field-assembly connector developed for underwater use up to 5m depth, employing the classic ClearTech Insulfit™ to seal the light end with an enhanced protection level. Consists of 3 types of structural design to enable sufficiently watertight. And the noticeable one is the idiot-proof integrated injection-molding waterproof treatment, which helps simplify the installation process and ease the operation error on the site. Secured by the picked sealing materials, the reliability remains the same in the long run, as the internal silicone performs well in the weather resistance, and the external stainless steel makes it rust-resistant. The whole assembling process is quick and convenient.

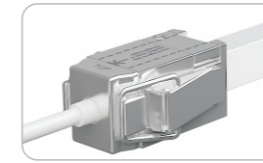
In-house Test

Test Object	No.	Experiment Item	Standard
Metal Parts	1	Weather Resistance-Salt Spray	IEC 68-2-11
Waterproof	1	Waterproof-IPX5 / IPX7 / IPX8	CLEAR-defined [®]
Connector	2	Swing-extreme	CLEAR-defined [®]

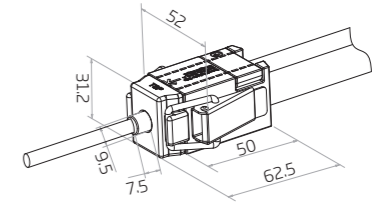
[®]Before waterproof test, high-low temperature cycling shock test has been implemented to simulate the outdoor harsh weather, and it's a more stringent standard we're compliant with than third party's.

Dimension: mm

Bail-latch Front Connector



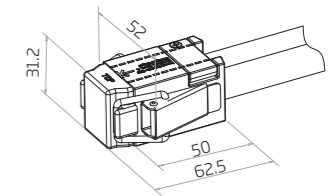
F22B-VB/HB-BL/FC-01/02-E
F22D-HB-BL/FC-01/02-E
F22S-HB-BL/FC-01/02-E



Bail-latch End Cap



F22-BL/EC



Note:

1. Unless otherwise stated, the tolerance of the connector is $\pm 0.5\text{mm}$.
2. To avoid damage from the excessive force on cable joint, please keep at least 60mm of cable ahead in the natural state.

F22B	BL/FC	01	E	3000mm
F22B-VB/HB F22D-HB F22S-HB	BL=Bail-latch FC=Front Connector EC=End Cap	01=01 End 02=02 End	E=End Feed	2000mm Cable 3000mm Cable 5000mm Cable 10000mm Cable

Item Code(B)	Item Code(D)	Item Code(S)
F22B-VB-BL/FC-01-E-2000mm	F22D-HB-BL/FC-01-E-2000mm	F22S-HB-BL/FC-01-E-2000mm
F22B-VB-BL/FC-02-E-2000mm	F22D-HB-BL/FC-02-E-2000mm	F22S-HB-BL/FC-02-E-2000mm
F22B-HB-BL/FC-01-E-2000mm	F22-BL/EC	F22-BL/EC
F22B-HB-BL/FC-02-E-2000mm		
F22-BL/EC		

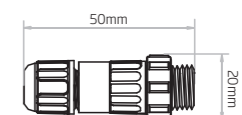
Note:

1. Please ensure the cable length is not more than the "Max. Cable Length" in the page mentioned above according to light length and its wire gauge to minimize voltage drop.
2. All the nominal cable lengths are measured before processing, so the delivered (visible) ones would be a little shorter. Please contact us before ordering if any strict requirement on them.
3. The tolerance range of cable length enlarges as the cable becomes longer, maximum up to $\pm 50\text{mm}$.

Male & Female Connector



For plug and play cable junction, IP67



Note:

Unless otherwise stated, the tolerance is $\pm 2\text{mm}$.