

nortronic

Casambi

The foundation for smart lighting



CASAMBI

Where ideas
come to light.

In today's world,
people crave the
ability to personalize
their lighting
experiences.

This surge in demand has ignited a substantial trend in the lighting industry, centering around integrated control systems. These systems prioritize Human Centric Lighting, champion energy efficiency, tap into natural light, and offer the flexibility to finely tune color, brightness, and intensity to meet various needs.

Casambi provides smart lighting control via intuitive applications that set new standards in user interaction with light. Our Bluetooth Low Energy-based technology easily integrates into fixtures and devices, allowing manufacturers to craft bespoke Casambi Ready products. We guarantee seamless interoperability between all products and with industry standards. Our new DALI controller series, Salvador, has brought Casambi's offering to the wired market. Users can mix and match for tailored lighting networks – wireless, wired, or hybrid - ensuring adaptability across settings while enjoying the rich functionality and ease of use that define the Casambi experience.



Loved by many.

Casambi technology is integrated into fixtures, drivers, switches, and sensors, encompassing a diverse array of modules. Collaborating with manufacturers, we have ushered in a collection of 1000+ enabled products.





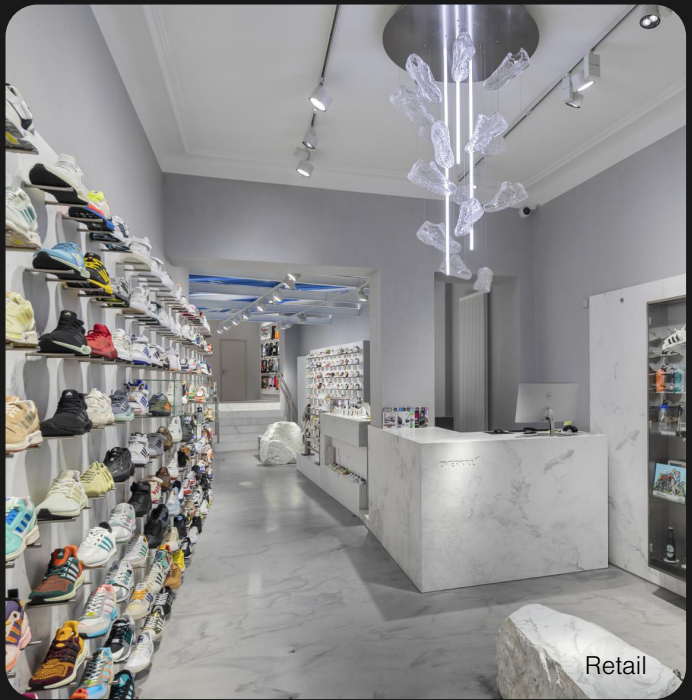




John Hardy Boutique, in Bali, Indonesia deployed Casambi to limit the need for wiring to protect the existing bamboo structure and to curate an unforgettable experience for visiting customers.



Office



Retail



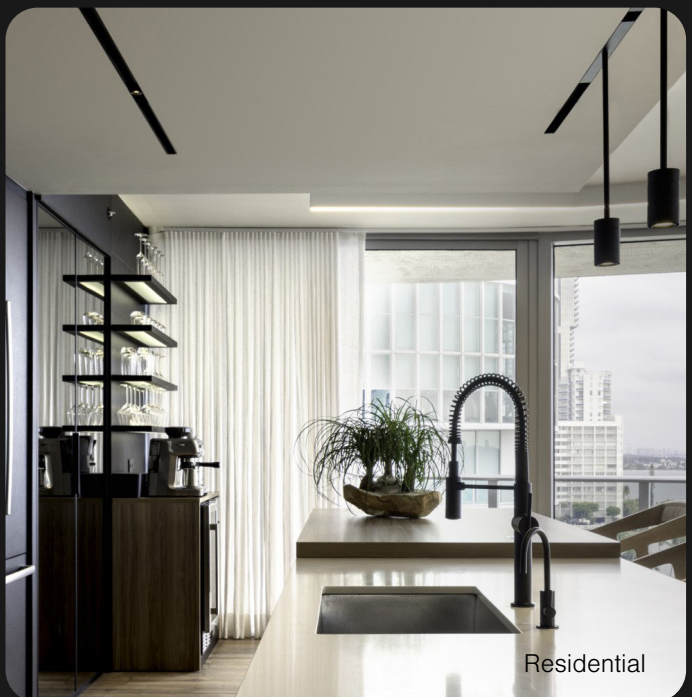
Healthcare



Historical buildings



Education



Residential



Application areas



Industry



Hospitality



Outdoor

Enabling the best lighting experience, ever.

With our technology, it's possible to craft lighting experiences that surprise, delight, and provide the perfect illuminance for every occasion.

Our raison d'être considers the impact of light on human health and well-being, offering a method to control lighting that enhances the quality of life. The goal is to ensure that lighting systems are energy-efficient, not only reducing energy consumption but also contributing to environmental sustainability. Lighting controlled using Casambi integrates with and complements natural light sources by adjusting artificial lighting in response to natural light levels, fostering a more harmonious environment.

Casambi excels in refurbishment and retrofit projects, offering a solution that eliminates the need for extra wiring, associated surface reconstruction, and accommodates flexible lighting strategies. Casambi's robust long-range communication capabilities extend its use cases to outdoor and expansive spaces.

Your all-in-one solution for complete control.

The Casambi App.

The Casambi App is your one-stop solution, offering unparalleled control over your lighting environment. Create intricate automation effortlessly, encompassing motion sensors, daylight sensors, circadian rhythms, calendars, and more. Seamlessly integrate blind control, environmental monitoring, and innovative solutions, all from a unified platform.

A close-up photograph of a person's hand holding a smartphone. The phone's screen shows the Casambi app interface, with the time '16.00' and the word 'Group' visible. The background is a warm, out-of-focus indoor setting.

Functionality
at your
fingertips



Light color.
Cruise the color spectrum.



Sunrise & sunset.
Tune into nature.



Calendar & timer.
Master time management.



Color temperature.
Tweak the color temperature.



Grouping.
Choreograph your lighting.



Scenes.
Set the scene.



Gallery.
Personalize your UI.



Daylight sensor.
Introduce daylight harvesting.



Occupancy sensor.
Read the room.



Control hierarchy.
Enjoy conflict-free control.



Gateway.
Gain remote-remote control.



Animations.
Create movement with light.

For total freedom to create and integrate.

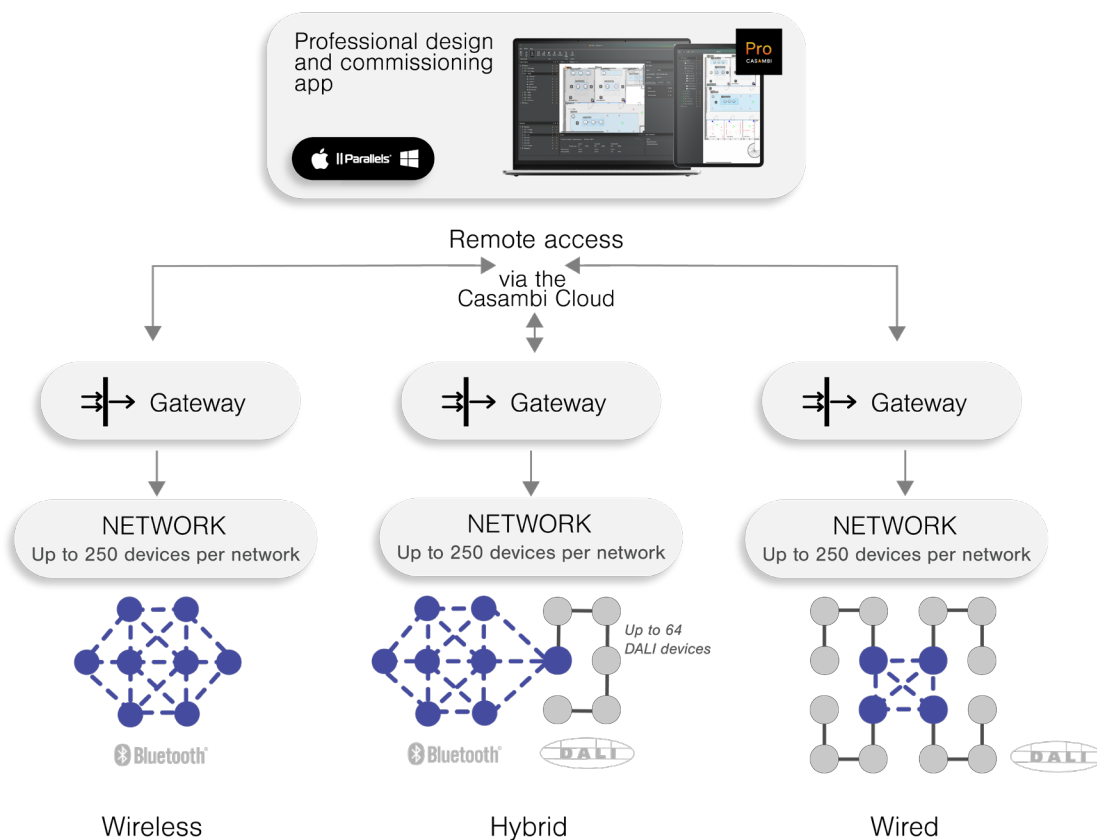
Neither wiring nor legacy standards should ever limit what you can do with light.

Over the past decade, we've been busy building an extensive foundation for smart lighting control; offering a platform for smart product development, and seamless integration of all brands, standards and product types to bring the greatest of lighting design ideas to life with ease and simplified sophistication.

We offer a fully holistic solution that aligns with industry traditions while offering the benefits of a modern, digitalized lighting control system. Our goal is to empower our customers with

a comprehensive and future-proof lighting control solution that seamlessly combines wired standards with the flexibility and efficiency of wireless technologies.

For example, we can take the best elements of the DALI standard and add an easy way of lighting control that is better aligned with today's digital consumer. Salvador, our DALI controller series, seamlessly integrates wired DALI drivers into the Casambi system. This innovation allows wired and wireless devices to coexist harmoniously, opening up new possibilities for project customization.



Wireless mesh solution.

As the most popular and reliable low-power radio technology found in all modern devices today, Bluetooth® Low Energy serves as the means of communication between a mobile phone or other control device and a Casambi network. Casambi's technology establishes a specialized mesh network, known as the 'Casambi Mesh', tailored especially for lighting, facilitating secure, encrypted device-to-device wireless communication within the lighting network.

Casambi technology can be integrated into fixtures, LED drivers, switches, sensors and different kinds of control modules. Casambi Ready products, which are manufactured by our partners, are 100% compatible with each other and with our own native products.

Interoperability is achieved through every product in the Casambi Mesh network operating in the same environment, running on the same firmware. This ecosystem architecture enables the Casambi network's firmware to be easily

updated in real-time, over-the-air, allowing for instant feature and performance updates across all devices within a mesh.

DALI for the wireless era.

Our support for DALI, the most widely used standard, ensures that if you choose a wired DALI solution or wish to incorporate DALI within our wireless offering, you will always receive a full, flawless Casambi experience, no matter the setting.

You can seamlessly integrate a DALI device into your Casambi Mesh using a CBU-DCS, CBU-A2D, or CBU-ASD unit. This integration enables you to control a DALI-compatible lighting fixture using the Casambi app or other Casambi-compatible control interfaces. Alternatively, go broader: Salvador seamlessly integrates wired DALI drivers into the Casambi system, with a single unit capable of controlling up to 64 DALI drivers. The CBU-DCS can also be utilized with a DALI gateway profile to integrate Casambi wireless networks into a wired DALI system.

Interoperability with other standards.

Casambi aligns seamlessly with all the standards that hold a substantial presence in the market.

Currently, Casambi devices are compatible with DALI (including DT6 and DT8), DALI-2 and D4i, EnOcean, 0-10V & 1-10V, PWM controllable LED strips, Phase cut dimming, Relay input & output, DMX.







The Panathenaic Stadium, in Athens, Greece, cut light pollution by 70% through Casambi control. Casambi offers a solution for vast spaces and outdoor applications, extending from interiors to exteriors with ease.



The Terrace in Berlin, Germany provides a seamless user experience with a vast, intricate, yet invisible network of Casambi Ready sensors and luminaires.



Arrivals		
Saapuvat Ankomst		
EXIT 1		
Flights	From	To
14100	SEA	10:00
14101	SEA	10:10
14102	SEA	10:20
14103	SEA	10:30
14104	SEA	10:40
14105	SEA	10:50
14106	SEA	11:00
14107	SEA	11:10
14108	SEA	11:20
14109	SEA	11:30
14110	SEA	11:40
14111	SEA	11:50
14112	SEA	12:00
14113	SEA	12:10
14114	SEA	12:20
14115	SEA	12:30
14116	SEA	12:40
14117	SEA	12:50
14118	SEA	13:00
14119	SEA	13:10
14120	SEA	13:20
14121	SEA	13:30
14122	SEA	13:40
14123	SEA	13:50
14124	SEA	14:00
14125	SEA	14:10
14126	SEA	14:20
14127	SEA	14:30
14128	SEA	14:40
14129	SEA	14:50
14130	SEA	15:00
14131	SEA	15:10
14132	SEA	15:20
14133	SEA	15:30
14134	SEA	15:40
14135	SEA	15:50
14136	SEA	16:00
14137	SEA	16:10
14138	SEA	16:20
14139	SEA	16:30
14140	SEA	16:40
14141	SEA	16:50
14142	SEA	17:00
14143	SEA	17:10
14144	SEA	17:20
14145	SEA	17:30
14146	SEA	17:40
14147	SEA	17:50
14148	SEA	18:00
14149	SEA	18:10
14150	SEA	18:20
14151	SEA	18:30
14152	SEA	18:40
14153	SEA	18:50
14154	SEA	19:00
14155	SEA	19:10
14156	SEA	19:20
14157	SEA	19:30
14158	SEA	19:40
14159	SEA	19:50
14160	SEA	20:00
14161	SEA	20:10
14162	SEA	20:20
14163	SEA	20:30
14164	SEA	20:40
14165	SEA	20:50
14166	SEA	21:00
14167	SEA	21:10
14168	SEA	21:20
14169	SEA	21:30
14170	SEA	21:40
14171	SEA	21:50
14172	SEA	22:00
14173	SEA	22:10
14174	SEA	22:20
14175	SEA	22:30
14176	SEA	22:40
14177	SEA	22:50
14178	SEA	23:00
14179	SEA	23:10
14180	SEA	23:20
14181	SEA	23:30
14182	SEA	23:40
14183	SEA	23:50
14184	SEA	00:00
14185	SEA	00:10
14186	SEA	00:20
14187	SEA	00:30
14188	SEA	00:40
14189	SEA	00:50
14190	SEA	01:00
14191	SEA	01:10
14192	SEA	01:20
14193	SEA	01:30
14194	SEA	01:40
14195	SEA	01:50
14196	SEA	02:00
14197	SEA	02:10
14198	SEA	02:20
14199	SEA	02:30
14200	SEA	02:40

Helsinki Airport, in Vantaa, Finland.
Casambi is deployed in highly sensitive environments, such as in hospitals and airports. Therefore, reliability and security of communication are critical. Our system is robust in design and has been certified as cyber-secure in accordance with global standards.

Hardware overview.



CBU-ASD-LR

The CBU-ASD-LR is a wireless control unit for LED drivers with 0-10V, 1-10V or DALI dimming interface. It's possible to configure it to support "no voltage" push button or to work with a standard PIR sensor (via smart switching).

EI nr 14 207 64



CBU-TED-LR

The CBU-TED-LR is a trailing-edge dimmer for the operation of incandescent lamps, dimmable LED lamps and dimmable LED control gear. It can also be configured as a sensor unit.

EI nr 14 207 65



CBU-A2D

The CBU-A2D can control one or two 0-10V controllable LED drivers, or it can control a tunable white LED driver with two 0-10V control interfaces. This product can also be configured in DALI mode whereby it can be connected to a DALI LED driver or DALI sensor for presence and/or daylight harvesting functions. The CBU-A2D has a universal 100-277 VAC input voltage range.

EI nr 14 207 63



CBU-PWM4

The CBU-PWM4 is a four-channel PWM dimmer for constant voltage LED loads, such as LED strips and constant voltage LED modules. It is connected between a 12-24 VDC power supply and the constant voltage LED load.

EI nr 14 207 76



CBU-DCS

The CBU-DCS is a Casambi-enabled DALI controller. It does not have its own power supply, it is powered directly from a DALI bus. The CBU-DCS can be used with a DALI sensor for presence detection or daylight harvesting. It can also be configurable as a DALI Gateway.

EI nr 14 207 73



Xpress-LR

The Casambi Xpress-LR is a wireless user interface for controlling Casambi-enabled luminaires. The four target buttons can control individual luminaires, groups, scenes, animations, and elements. The Xpress-LR has buttons for dimming and also up/down buttons that can control either the color temperature or direct/indirect light ratio.

EI nr 14 207 75 (sort)
EI nr 14 207 74 (Hvit)



Salvador Series

Salvador seamlessly integrates wired DALI drivers into the Casambi system. A single unit can control up to 64 DALI drivers. DALI luminaires are added to the Casambi network, becoming controllable in the same manner as any other Casambi-enabled luminaire. Salvador supports DALI DT6, DT8 and D4i. (Form factor is subject to modification)

EI nr 14 207 67 **SAL-1016**
EI nr 14 207 68 **SAL-1032**
EI nr 14 207 69 **SAL-1064**

Med integrert DALI strømforsyning 130mA
EI nr 14 207 70 **SAL-2016**
EI nr 14 207 71 **SAL-2032**
EI nr 14 207 72 **SAL-2064**



Casambi Cloud Gateway

Receive data from your Casambi network and remotely control it over the internet with a Casambi Cloud Gateway. Based on Raspberry Pi hardware, the Casambi Cloud Gateway comes with Ethernet and Wi-Fi connections for internet access. The user interface is the Casambi App. Two product variants are available; PSU(CGW-001-PSU) and PoE-enabled (CGW-001-POE).

EI nr 14 207 66

Casambi ecosystem products.

Casambi's technology platform serves as the foundation for intelligent and integrated lighting control. It's the vast Casambi ecosystem that brings innovative solutions to life and to the market. All Casambi Ready products are standardized with Casambi firmware to ensure smooth compatibility. Global suppliers contribute diverse solutions to enhance the Casambi portfolio, addressing indoor, outdoor, and architectural applications in various sectors.

5+ million

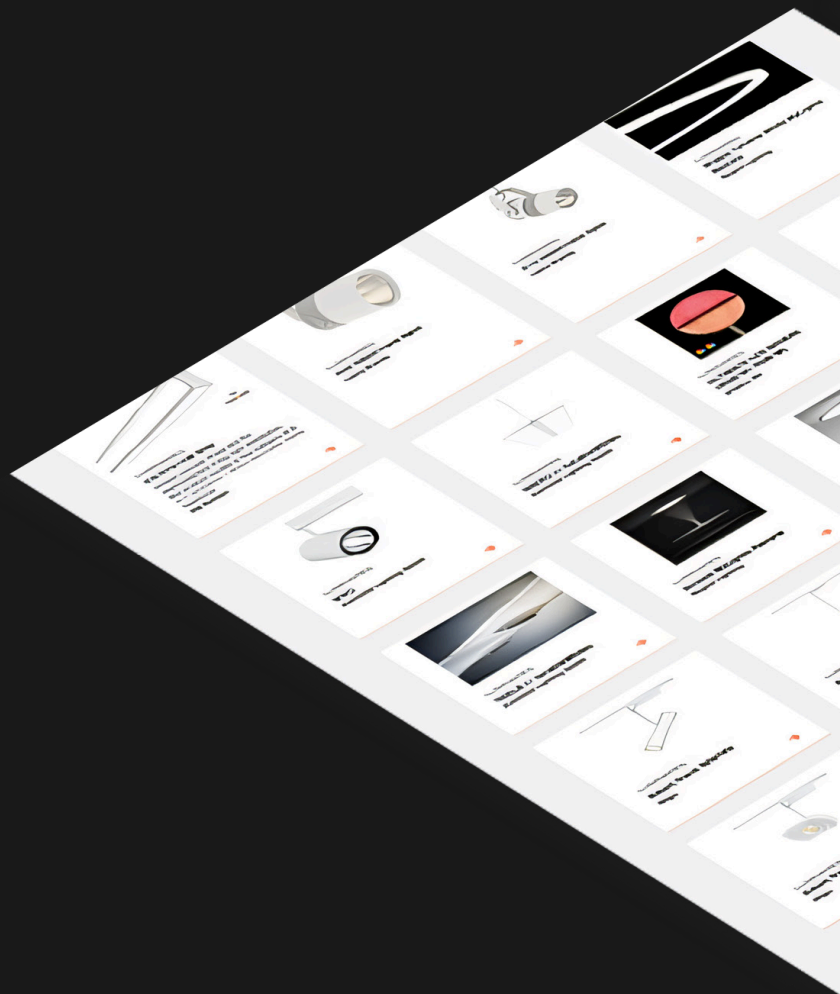
Casambi Ready products sold

100s

of component and fixture manufacturers onboard

200,000+

Projects completed



OSRAM

OT WL 25/220-240/700 NFC
CA LP I

Features

- Very wide operating window
- NFC interface for fast programming, including box programming
- High quality amplitude dimming
- Low standby consumption
- Emergency lighting for independent installation



arditi LIGHTING INNOVATIONS

Lepuk

- Touch dimmer to control devices in Casambi network
- Configurable and installable with the Casambi App
- LEPUK detection via motion sensor
- Can control up to four lights combined for up to two tunable white lights
- Remote TouchDim Dimming with 1 finger contact on the anodized aluminum spectacle
- Signaling via microcontroller light ring
- Low-power technology enables a battery life of up to 6 months
- Only suitable for "Casambi" network
- radio signal 2.4/2.483 GHz DSSS
- Range up to 60 meters
- battery 20-20250 aluminum polymer battery (3.7V 105 / 450, 550 mAh type: DS-20250SM-01)
- connectors 1 x USB Micro B
- Ambient temperature (ta): -20...+45 °C
- Dimensions 7x12x25mm



Similar products

AIMOTION Sensor Track System

Small wireless motion sensor for the Sensor Track System. It is a small, compact, and easy to install sensor that can be used in a variety of applications. It is a small, compact, and easy to install sensor that can be used in a variety of applications.

Price: 12.99

Features:

- Easy to install
- Long range
- Low power



Sassy restaurant and nightclub in Warsaw, Poland uses Casambi control to shift the lighting ambiance from a dining setting to a lively nightclub atmosphere.

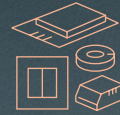


Supported all the way.



Casambi for Luminaire Manufacturers

When you integrate full control functionality into luminaires you unlock the full potential of your products.



Casambi for Component Manufacturers

Create your own Casambi Ready products, all backed by proven technology, extensive support, and valuable marketing opportunities.



Casambi for Sales and Service Partners

The future's wireless. Tap into existing demand in a fast-growing market and open new opportunities together with us.



Casambi for Specifiers

Casambi makes implementing and using advanced lighting controls easy and with 1000s of products to specify you'll have all the leading brands at your fingertips.

We offer comprehensive support, providing design advice, specification assistance, and a global partner network to address local needs. Our technical support team is also available to assist, ensuring accessibility for all stakeholders throughout the entire lifecycle of a system. While Casambi's user-first solution is designed for easy implementation, we also offer free training, ranging from introductory presentations to advanced 4C assessments. Our official certification and training partners collaborate closely with us, and all recognized partners are prominently listed on our website. No expertise in controls is necessary; our goal is to simplify the Casambi experience for everyone.

Simplifying lighting control configuration for professionals.

Orchestrate your luminary masterpiece with Casambi Pro.

Casambi Pro streamlines the planning and commissioning processes for ambitious projects. Tailored for installations with automated control systems, it enables off-site planning on Windows PC and rapid on-site commissioning via iPad. Enjoy design features like scene-setting, dimming, tunable white, and flexible management of layouts, spaces, groups, controllers, switches, and sensors. Export project data into detailed PDF & Word formats, set up Cloud Gateway access for remote access through iPad, easily share projects with colleagues and collaborators.

Revolutionize your lighting projects with Casambi Pro, the ultimate tool for efficient and user-friendly configuration.



More control over the final outcome.
Minimizing disruption.
Saving time.







The Giorgio Franchetti Gallery at the Ca' d'Oro in Venice, Italy, a state museum that is part of the Veneto Regional Museums Directorate, has received stunning new façade lighting thanks to Casambi.



AMI + Wood Ear, a Michelin-starred restaurant in Hong Kong, has created a unique dining experience with discrete Casambi Ready lighting that can be adjusted without interrupting service.

CAS  MBI

nortronic 

www.nortronic.no • post@nortronic.no • tlf 66 81 38 60